

BIKES

2022 HANDBOOK



BRCA
BRITISH RADIO CAR ASSOCIATION

50

★ YEAR ANNIVERSARY ★



BRITISH RADIO CAR ASSOCIATION

To keep up to date with what's going on in the world of Radio Control Bikes visit the BRCA main website at www.brca.org

HOME CLUBS EVENTS AGM JOIN CONTACT BRCA COVID-19 INFORMATION [LOG IN](#)

BRCA
BRITISH RADIO CAR ASSOCIATION

08
TUE FEB

HOME **SECTIONS** RESULTS RULES & DOCUMENTS SMART SEARCH MORE

1/5th Bikes Superbike Superstock Colours 4WD

BRCA BIKES

Bike Section

Welcome to Radio Control Bikes

We are a relatively small group of RC enthusiasts who in the main have found this form of RC Modelling by accident, much in the same way as you, if your reading this for the first time.

Traditionally based around the 1/5th Scale On Road Classes, we have evolved over the last decade or so to welcome most forms of on road bikes. Whilst we still focus on 1/5th Scale competition the new 1/8th On Road

BIKE MENU

- [Bikes Section Home](#)
- [RC Bike Manual](#)
- [Bike Section Events](#)
- [Bike Section History](#)
- [Bike Section Results](#)
- [Bike Section Documents](#)

BIKE EVENTS

- [Bike National Series 2022 Event 1](#)
07-05-2022 12:00 pm
- [Bike National Series](#)
- [Mando](#)

Welcome to your new 2022 Bikes handbook.



We are a relatively small group of RC enthusiasts who in the main have found this form of RC Modelling by accident, much in the same way as you, if your reading this for the first time.

Traditionally based around the 1/5th Scale On Road Classes, we have evolved over the last decade or so to welcome most forms of on road bikes. Whilst we still focus on 1/5th Scale competition the new 1/8th On Road and Sidecar Classes are finding favour with existing and newcomers as an ideal opportunity to join in and have fun.

Along with most other sports, radio control enthusiast activities have suffered in the last two years. Thankfully the BRCA Executive Officers have been working non stop to ensure the sport continues to the maximum possible within the guidelines.

The Bike Section have planned a series of events in 2022 taking in some of the best venues in the UK which will form part of the Section Championship. In addition, we hope to have several Club events running in parallel where numbers justify.

If you would like to join us at any of the published dates or would just like some information, no matter how trivial you consider, then just get in touch with any of the contact names listed or just visit our active Facebook Group :- "BRCA Bike Section" where you will find numerous links to clubs, groups and shops.

Neal Vater

Chairman, BRCA Bike Section



Chairman

Neal Vater

07546 983138

bikechair@brca.org

Treasurer

Roy Davies

07792 201011

biketreasurer@brca.org

PRO Officer

Ross Bartlett

07969 979908

bikepro@brca.org

Secretary

Martin Woodcock

07787 538713

bikesec@brca.org

Competition Officer

Alex Wynn

07732 228255

bikecomp@brca.org

How To Use This Handbook

This booklet must be read in conjunction with the General Rules contained within the BRCA Members Handbook. The General Rules apply to all members and have precedent over sectional rules. It is the responsibility of each member to have read and understood the rules.

The application of the rules works thus:-

The BRCA General Rules apply at all events, including most club racing. Sectional Rules (as in this book) apply at Nationals plus other events, e.g. Regionals, as sanctioned by the section committee. Sectional rules do not apply at clubs unless the clubs wish them too and it is entirely at the discretion of the club.

Changing a rule

All rules, whether General &/or Sectional, are proposed and voted for by Association members. No-one can simply 'make up' rules. Changes to any of these existing rules can be made by the following process:

- Find another member who agrees with your suggestion to act as your seconder.

Then write/email to one of the following people:-

- Section Rule to be changed - write to the Section Secretary - who will liaise with you to ensure it is voted on at the section conference
- Association General Rule including the Constitution - write to the Association Secretary - who will liaise with you to ensure it is voted upon at the Association Annual General Meeting.

You should endeavour to attend any meeting where a rule change, you have proposed, is taking place. It will be discussed, possibly amended, and you will be asked to elaborate on it.



CONTENTS

Chairman's Introduction	3	Brookland	8
Committee & Contacts	3	Cotswolds	9
How To Use This Handbook	4	Crystal Palace	10
National Championship	5	Halifax	11
5th Electric Bikes	6	Mendip Raceway	12
National Calendar 2022	7	Section Rules	12-16

BRCA Bikes Section 2022 © BRCA 2016-2022. All rights reserved

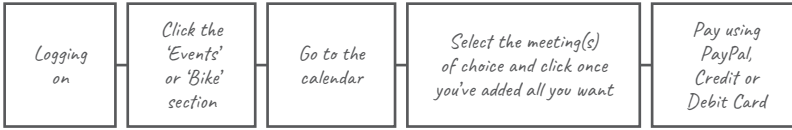
Registered address: BRCA c/o. No 4, The Bungalow, Hopshort, Cheswardine, Shropshire TF9 2NS

The BRCA's consent must be obtained before any part of this publication may be reproduced in any form whatsoever, including photocopyers and information retrieval systems.

How to Book in for a National Event

All racers must follow this process when registering for a BRCA Bike Section National meeting

- All entries must be made via the BRCA website
- This can be done by:



Please make sure you select the primary class.

The entry fee is £25 for the full weekend, with a closing date for entries at 23:59 Friday 7 days prior to the event.

At this point the Section committee will confirm if entries are sufficient (minimum 10 entries) for the event to take place.

Entry will reopen (with additional £5 late fee) until 12:00 on Saturday of the event weekend.

The Section refund policy is:

- ✓ Full refund will be given for no shows if notice is given via the BRCA booking in portal or to a Bike Section Committee Member before 23:59 on Friday 7 days prior to the event.
- ✓ Post closing date refund is discretionary

Classes At National Meetings For The Bike Section



Scrutineering

Scrutineering will be after each race. Place your bike or sidecar in the designated place. Additional spot checks in the pits will be carried out.

Health & Safety

A Risk Assessment will be completed prior to the start of each event and sent to the Vice- Chairman of the BRCA.

All members MUST use a LiPo sack during charging of lithium based batteries and all must comply with the BRCA general rules.

All Marshalls must be on their marshal point, wearing a Hi-Viz jacket, before the start of the Heat/Final. Any member not able to marshal must provide a suitable replacement to cover their point. The race director has the full responsibility for the running of the meeting and all activity at the track.



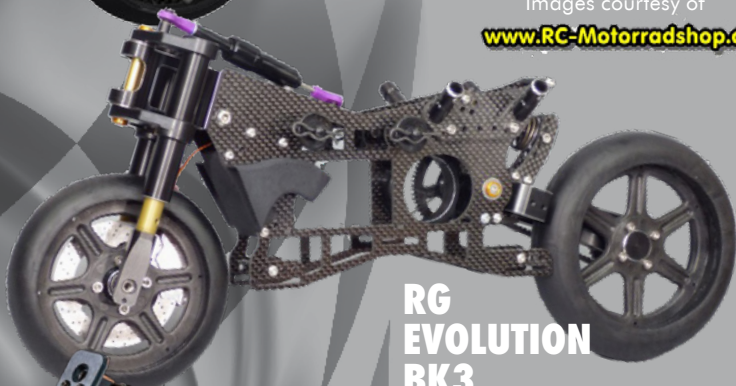
5th ELECTRIC BIKES



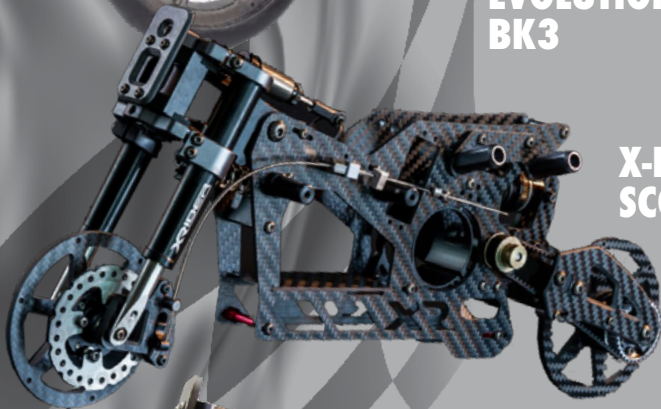
**LIGHTSCALE
ONE**

Images courtesy of

www.RC-Motorradshop.de



**RG
EVOLUTION
BK3**



**X-RIDER
SCORPIO**



ZH 418

The BRCA BikeNationals promote RC Bike racing and encourage new racers.

National events are open to all, from entry level to experienced racers.

MAY			
7th - 8th	National Event 1	Mendip Raceway	
MAY			
21st - 22nd	National Event 2	Crystal Palace	
JUNE			
18th - 19th	National Event 3	Brookland	
JULY			
23rd - 24th	National Event 4	Halifax	
OCTOBER			
17th - 18th	Des Chand GP	Cotswold	

Events will take place at selected Clubs in the UK.

Saturday: Open practice to work on your setup or develop your skills. Help with your bike if you're having trouble.

Sunday: Qualifying heats and finals. Each meeting is separate with trophies. See Promotour rules for details.

Results from the two finals will be used to add points to the competitors score. So each national event gives two round results for the national championship.

Separate points score for each class raced, so a competitor will have a national ranking for each class entered during the season.

See rules section for detail.

Des Chand GP is a season finale. Results will not count in the national championship.



Address

Brookland Raceway
Romney Marsh
Kent
TN29 9TF



Website

southeastrccc.co.uk



Contact

markgrant@radiocontrolracing.co.uk



Pitting

Covered pits with electric,
fully covered rostrum.
Ladies, Gents and
Disabled toilets available.

Camping & Catering

Check with club.

Address

Cotswold Model Car Club
Hanger/Woodside
Haresdown Hill
Kemble Cotswold Airport
Cirencester
GL7 6BA



Website

cotswoldmcc.co.uk

Contact

secretary.cotswoldmcc@gmail.com



Pitting

Fully covered pitting area with benches, tables and mains electric. Compressor in pitting area. The rostrum is covered.

Camping

Must be pre-booked with club on their website. Available Saturday night £5 tent, £10 caravan.

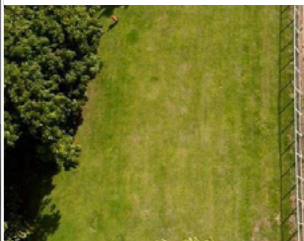
Catering

There are facilities trackside. Hot and cold food and drink are also served at the onsite AV8 restaurant.



Address

Crystal Palace Car Club
National Sports Arena
27 Ledmington Road
London
SE19 2BB



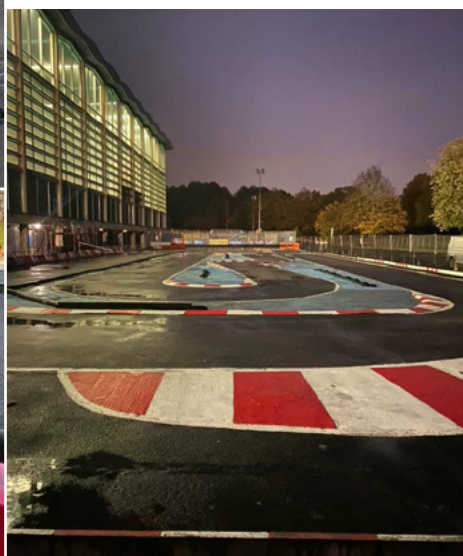
Website

Visit us on Facebook



Contact

crystalpalacecarclub@yahoo.co.uk
0754 576452





Address

Yorkshire Radio Control
Model Car Racing Club
Halifax Track
Stainland Road
Halifax
West Yorkshire
HX4 8LS

Website

halifaxtrack.co.uk



Contact

John Russell
07762 092512 • john.russell@brca.org

Pitting

Fully covered pitting area with benches, tables and mains electric. Compressor in pitting area. Site open from 14:00 Friday but track closed. Toilet block with separate gents, ladies and disabled toilets.



Camping

Available through the club.
Available Friday and Saturday
night, £7.50 per night.

Catering

Cafe on site hot and cold drinks
and hot & cold food available.



Address

Mendip RC Raceway
Accommodation Road
Bleadon
Weston-super-Mare
North Somerset
BS24 0AP

Website

mendiprcraceway.co.uk



Contact

info@mendiprcraceway.co.uk



www.mendiprcraceway.co.uk

Pitting

Undercover pit benches available.
Compressed air available. Ladies and gents toilets available.



Camping

Must be pre-booked through club's website.

Catering

On site cafe serving hot and cold drinks and hot food is normally available.

BIKES RULES



BRCA
BRITISH RADIO CAR ASSOCIATION

1. INTRODUCTION

- 1.1. The Event is being organised to create a racing calendar of fun competition racing at locations around the UK. The ethos being to encourage the membership of the BRCA Bike Section to grow.
- 1.1.1. All are welcome, whether they have competition experience or not.
- 1.1.2. No Newbie* (see note below) will be turned away from the meetings due to a conflict with the Construction Rules.
- 1.2. **Common Sense**
- 1.2.1. The Committee have the scope to apply common sense to the Rules and will amend accordingly for introduction at the first opportunity or immediately if appropriate, i.e., safety grounds.
- 1.3. **Race Weekend**
- 1.3.1. Saturday - Practice normally 12 noon till 5pm
- 1.3.2. Sunday - Race day 9am till 5pm
- 1.4. **Calendar**
- 1.4.1. The Events will normally be between the months of March and September at Clubs and Locations around the UK, dates and locations to be released early in the New Year.
- 1.4.2. In addition we will continue to run the Cotswold GP and make every effort to accommodate the dates for the Ulster TT and the Bike World Champions within the Calendar.
- 1.5. **Entry System and Cost**
- 1.5.1. Entry cost is £25 per weekend.
- 1.5.2. Preregistration entry is required but cashless payment will be allowed up to closing time/date.
- 1.5.3. Up to two separate classes may be entered.
- 1.6. **Race Format**
- 1.6.1. Qualifying Heats will be 4 x 8 minute - Rolling start
- 1.6.1.1. Heats numbers to be confirmed by Race Control
- 1.6.2. Finals will be 2 x 8 minutes - Start line launch
- 1.6.2.1. Finals position will be based on best Three Consecutive Laps during Qualifying.
- 1.6.2.2. Finals to be no greater than 8 or lower than 5 to ensure minimum of 5 marshals. ***
- 1.6.3. All drivers to Marshal the Heat or Final following their run.
- 1.6.4. 1/8th Class and Sidecar Marshals as note below.**
- 1.7. **Classes Raced**
- 1.7.1. 1/8th Open Class
- 1.7.2. 1/5th Superbike
- 1.7.3. 1/5th SuperStock
- 1.7.4. 1/5th Nitro Bike (where Clubs allow)
- 1.7.5. 1/8th Sidecar

2. CLASS CONSTRUCTION RULES

- 2.1. **Classes**
- 2.1.1. **1/8th Electric**
- 2.1.1.1. Open motor
- 2.1.1.2. Open speed control
- 2.1.1.3. Mechanical Brake allowed
- 2.1.1.4. 2S Hard case lipo
- 2.1.2. **1/5th Electric Superstock**
- 2.1.2.1. 13.5t minimum motor wind or above from EB List
- 2.1.2.2. Speed Control zero timing indicated by a flashing LED or Sensorless Speed Control.
- 2.1.2.3. Mechanical brake is allowed.
- 2.1.2.4. 2S Lipo from EB List
- 2.1.2.5. Sensorless motors are allowed, maximum of 3300Kv.
- 2.1.3. **1/5th Electric Superbike**
- 2.1.3.1. Modified motor
- 2.1.3.2. 2S Lipo from EB List
- 2.1.3.3. Open Brakes
- 2.1.4. **1/5th Nitro Superbike**
- 2.1.4.1. No limits
- 2.1.5. **Sidecars**
- 2.1.5.1. 17.5t Brushless motors from EB List or Silver Can Motor
- 2.1.5.2. Nitro power source is open.
- 2.1.5.3. Sidecar chassis must fit within the shell.



- 2.1.5.4. Single rear wheel drive, single front wheel steering.
 2.1.5.5. 2S Lipo from EB List or 6 Cell NiM
 2.1.5.6. The centre of the front tyre can have a maximum offset of 25mm from centre line of the rear tyre
 2.1.5.7. Sidecar wheel can be positioned freely but wheel centre must be in front of the driven wheel centre. Sidecar wheel steering by radio control is not permitted.

2.2 Class Dimensions

1/5th On Road Dimensions	Max	Min	Dims. in mm
Wheelbase	320	280	
Rear Wheel Rim Dia	95	80	
Front Wheel Rim Dia	95	80	
Tyre Width	35		
Overall height	300	225	Incl. Rider
Weight	Unlimited		

Sidecar	Max	Min	Dims. in mm
Length	435		
Width	220		
Heights	120		
Rear Wheel Dia	63	38	Wheels (must fit within shell)
Front Wheel Dia	63	38	
Sidecar Wheel	63	38	
All Tyre Width	45		
Weight	Unlimited		

1/8th On-road Dimensions	Max	Min	Dims. in mm
Wheelbase	220	180	
Rear Wheel Dia	87	75	
Front Wheel Dia	87	75	
Any Tyre Width	26		
Overall height	220	165	
Weight	Unlimited		

2.3. Appearance

- 2.3.1. Should be realistic and scale in appearance, neatly finished, and complete with bodywork and rider, all of which should be painted.

2.4. Tyres

- 2.4.1. Any solo bike tyre specifically designed for bike use.
 2.4.2. Tyres must be black, sidewall details may be a contrasting colour.
 2.4.3. All Sidecar tyres can be foam or rubber, typically 1/10th or 1/8th origin.

2.5. Additive

- 2.5.1. Non slimy and odourless tyre additive to be allowed, but only at circuits that allow it.

2.6. Brakes

- 2.6.1. Brakes can be either disc or drum

2.7. Exhaust / Induction Noise

- 2.7.1. The complete exhaust system should be contained within the confines of the body work and fitted in such a way as to minimise the risk of injury to marshals.
 2.7.2. If any part of the exhaust / silencer system fails or becomes detached during a race the rider has to return to the pits immediately to have the problem rectified.

3. GENERAL RULES

- 3.1. BRCA membership is required and shown at race control if requested.
 3.2. BRCA General Rules Apply
 3.3. If in doubt about anything "Meeting" related then just ask!
 3.4. Smoking or Vaping is only allowed in designated areas and not in the pits.
 3.5. Drivers Briefing & Safety

- 3.5.1. A drivers briefings will be held on Race Day and will include but not limited to:
 - 3.5.1.1. Lipo safety in accordance with BRCA General Rules.
 - 3.5.1.2. Always follow local signage and or instructions.
 - 3.5.1.3. Awareness of local fire safety instructions.
- 3.6. **Driving Standard and Personal Conduct**
 - 3.6.1. We must encourage fair and competitive racing but sometimes, even as Adults, we get annoyed with ourselves and others but it is not acceptable to;
 - 3.6.1.1. Cause a nuisance or use abusive language to another competitor or visitor.
 - 3.6.1.2. Intentionally hinder another competitor during qualifying; always allow the quicker driver to pass at the first available location and time.
 - 3.6.1.3. Intentionally cause another competitor to leave the circuit or run into the slower driver.
 - 3.6.1.4. Acting in a way that may cause injury to another competitor or damage to another competitors equipment.

4. NATIONAL CHAMPIONSHIP

- 4.1. National points scoring to be awarded from the finals.
- 4.2. Max 100 points from each separate final, then 98 for 2nd, 97 for 3rd etc.
- 4.3. At least one lap must be counted in a final to score points. Zero points will be awarded otherwise.
- 4.4. The two lowest scores for the season will be dropped for each competitor.
- 4.5. In the event of a championship points draw, countback using the dropped scores will be used.

DEFINITION NOTES

- *- "Newbie" defined as a person who has not raced within the BRCA Bike Section after 2016
- **- As 1/8th Class and Sidecar Class participants are likely to include 2nd Class entries from 1/5th Class entrants, we will plan for the Class to marshal itself for both heats and finals, i.e., Final B marshal Final A and vice versa, If numbers aren't sufficient we will request volunteer marshals. This is to ensure adequate marshals are present for both Classes.
- ***- Heat & Final Numbers

Attendees	Computer setting per Final		
	6	7	8
<10 / 2	=	=	=
11	6+5		
12	6+6		
13		7+6	
14		7+7	
15			8+7
16			8+8
17	6+6+5		
18	6+6+6		
19		7+7+5	
20		7+7+6	
21		7+7+7	
22			8+8+6



RACE NUMBERS

WE HAVE REFRESHED OUR RANGE
OF RACE NUMBERS FOR 2021

50mm
BLACK NUMBERS
ON WHITE

#1-10
£30

ROLLS OF 100 = 1000 NUMBERS

#1-6
£20

ROLLS OF 100 = 600 NUMBERS

NEW
65mm
BLACK NUMBERS
ON YELLOW

#1-14
£45

ROLLS OF 100 = 1400 NUMBERS

BRCA
BRITISH RADIO CAR ASSOCIATION

Order via www.brca.org

Prices include postage, allow 3-4 days for delivery.

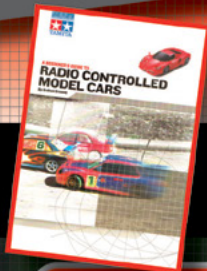
For Assistance go to www.brca.org/contact

ON YOUR MARKS,

GET SET, SUBSCRIBE!

GET RACER DELIVERED THROUGH YOUR DOOR AND SAVE UP TO

47% + A FREE
GIFT



**SUBSCRIBE TODAY - GET 12 ISSUES FOR £27
& GET THE BEGINNERS GUIDE TO RC CARS WORTH £11.95 FREE!!!**

www.rcracer.com



Follow us on Facebook
facebook.com/rcracermagazine

Follow us on Twitter

[@rcracermagazine](https://twitter.com/rcracermagazine)



01525 222573



www.doolittlemedia.com



enquiries@doolittlemedia.com



Image courtesy of www.neo-buggy.net

Available on the iPhone
App Store

Google play

