

Welcome to the LMP Nationals at Hednesford Indoor Raceway. Hosted by Stafford RCMCC

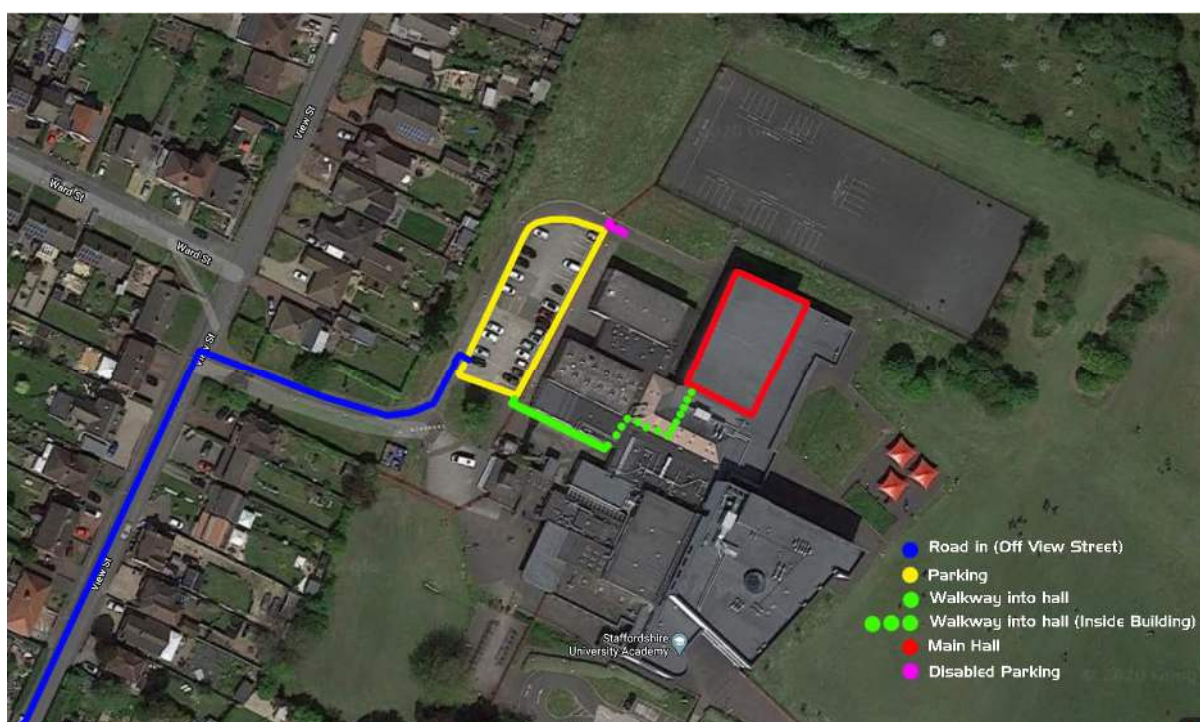
The full address of the venue is:

Hednesford Indoor Raceway
Staffordshire University Academy
off View Street
Hednesford
Cannock
Staffordshire



Please use post code WS12 4JD

This is a link to google maps <https://goo.gl/maps/BuTFNyLoWGvPSLYA8>



School Information

Directions and Car Parking:

(See layout above for the parking area) Please Park neatly and please don't block anyone in unless you know them!,

This is the side entrance to the school that allows access to the main sports hall. Please look at the information above as the main Academy entrance on Belt Road **Will Not allow access to the hall.**

Smoking:

As this is a school the whole site is strictly a no smoking area and that includes vapes and E-cigarettes. **Smoking is only allowed outside of the school gates on View Street**

Fire safety

There are no planned fire alarm tests on either day, so if the fire alarm sounds, please leave the building via the 2 fire escapes at the end of the sports hall or the fire exit in the pitting hall (this will be pointed out in the drivers briefing) and assemble on the carpark.

Fire buckets will be placed around the hall for any incidents that may occur.

Meeting Information

Opening Times:

Hall opens at 07:30 on the Saturday and Sunday.

Please don't try to gain entry before this time unless you are part of the event assembly team.

Practise round starts at 08:30, See below for full event timings, (timings are approximate)

Saturday Timings:

07:30	Doors Open - Track Closed
08:15	Drivers Briefing
09:00	Practice Round
10:28	Qualifying Round 1
11:56	Qualifying Round 2
13:24	Qualifying Round 3
14:52	Qualifying Round 4
16:25	Finals
18:00	Presentation
18:30	Close.

Sunday Timings:

07:30	Doors Open - Track Closed
08:15	Drivers Briefing
09:00	Practice Round
10:28	Qualifying Round 1
11:56	Qualifying Round 2
13:24	Qualifying Round 3
14:52	Qualifying Round 4
16:25	Finals
18:00	Presentation
18:30	Close.

Our Track:

Is in the main sports hall. We run on Lindau carpet that covers an area of almost 400m², with a width of 14 metres and a length of around 28 metres. The track is marked out with 50mm² plastic with flexible corner markers.

Racing/Driver etiquette:

Aggressive, threatening, or abusive behaviour will NOT be tolerated, towards other racers, marshals, and club officials.

In qualifying you are racing against the clock not the other racers in your heat so please let any faster cars through.

Electric:

Please bring an extension lead with you for your own use.

Pitting:

Pitting will be in the Gym adjacent to the main sports hall, please bring your own chairs, tables will be provided, we do have some chairs available for your use. Bear in mind that you may need to restrict the amount of kit you bring with you as it could be tight for space depending on numbers.

Kit can be left in the pitting hall on the Saturday night, **but YOU MUST take all LIPO's with you (LIPO's are not to left on site overnight) also please be aware that the school or club take NO RESPONSIBILITY for any kit left on site.**

Any help on the Sunday night assist us pack away would be much appreciated

Rostrum:

Please access the rostrum via the steps closest to race control, once your race has finished egress the rostrum via the steps at the opposite end and go straight to your marshalling point, tables will be available under the rostrum to place your cars and equipment on.

Tyre Truing

A tyre truing area will be set up in our equipment container just outside of the main sports hall.

Air Blowers

Air blowers are allowed but again must be used outside, cars and shells may be brushed off in the pitting hall but please use 1 of the bins provided.

Race Results:

Your heats, FTD's and results will all be available LIVE on the day at RC-Results.

RC Results will be displayed in the pitting hall via a projector; speakers will also be set up in the pitting hall

Food & Drink:

Neo's Kitchen will be attending both days (same as last year), so please support.

Hotels:

Local hotels in the area

All available to be booked via www.booking.com

Premiere Inn Cannock South WS11 1SJ

3 Miles from venue

Holiday Inn Birmingham north (Cannock) WS11 0DQ

3 Miles from venue

Premiere Inn Cannock Orbital WS11 8XR

3.5 Miles from venue

Travelodge Rugeley WS15 2AS

5.5 Miles from venue

Premiere Inn Rugeley WS15 1LX
7 Miles from venue