

# Contents

Welcome	4
Where should you start?	5
How to use this book	6
The structure of your sport	7
Fellows of the Association	10
Association Officers	11
General rules	12
Insurance	15
Club manual	20
Guide to clubs	21
Section information	22
1/8th Circuit	23
1/8th IC Rallycross	25
1/10th Electric Circuit	27
1/10th Electric Off Road	29
1/10th IC Circuit	31
1/12 Electric Circuit	33
1/8th Stockcars	35
1/12th Stockcars	37
1/12th Electric Oval	39
Bikes, Electric & IC	41
Large Scale Off Road	43
Large Scale On Road	45
1/8th Nitro Truggy	47
Micro Scale	49
Constitution	50
Frequency Information	55
Electric Board	56

BRCA Handbook 2017

© BRCA 2017

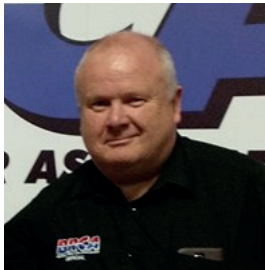
All rights reserved

Registered address: BRCA c/o 7 Buck Lane,  
Hough, Crewe, Cheshire CW2 5JP

The BRCA Handbook is published annually and supplied to all current members and affiliated clubs of the association.

The BRCA's consent must be obtained before any part of this publication may be reproduced in any form whatsoever, including photocopiers and information retrieval systems.

# WELCOME!



Welcome to our handbook for the 2017 season. Whatever level you race at and in whatever class, we are here to help you enjoy your racing. Within the handbook there is enough information for novices and experts alike to gain the most from our world of model motorsport. Enjoy your racing and remember one thing; we cannot all win, but we all can be winners.

Dave Waters - Chairman, British Radio Car Association

## What do we do?

Essentially we race radio-controlled model racing cars, trucks and bikes. However this isn't as simple a statement as it might seem!

There are over 13 different classes detailed in this booklet ranging from small electric powered ones that do about 30mph through to cars powered by 3.5cc internal combustion engines that do over 80mph and even those with 23cc engines.

The racing caters for people from all backgrounds and doesn't discriminate on sex, age, or disability.

Radio-controlled model motor racing does provide a challenging sporting environment where the skill required to drive and build the cars can be tested against other like-minded competitors.

## Where do we do it?

The short answer is everywhere. It's quite likely that there's a club somewhere near where you live. The best method of finding your local club is by contacting your local model shops, or five minutes spent on the phone or internet, or go to [www.brca.org](http://www.brca.org) and the club listing. These sources can open up a whole new dimension in fun model motor sport.

## Who are we?

The British Radio Car Association has produced this booklet. We are a group of radio-control (RC) racing enthusiasts whose aims are best summed up by objective No. 1 in our Handbook

***'To promote the construction and racing of radio controlled cars'***

In this booklet you will find information on all the racing classes we organise and promote. We hope you will come racing and want to join us.

Please remember we are all unpaid volunteers doing what we can for model car racing. Many of the BRCA Officers have career and family commitments, so if the response isn't quite as quick as you'd like... keep calm and take a moment!

# Where should you start?

We would always recommend that you start at your local club. Find it from our web site ([www.brca.org](http://www.brca.org)) or have a ring around your local hobby shops, then get yourself down to their track and have a look at what's going on. Racers are very friendly people, so ask plenty of questions and decide if what they are doing is for you. If not, shop around as there are plenty of clubs out there, one near you will race the cars you're interested in. The key thing for a beginner is to find a club that you like, do what they do, learn the basics. You can always go off and pursue other scales later when you have decided exactly what is for you.

## Model shops

Check out your local hobby stores. Following your visit to the local clubs you'll probably have a good idea which ones the other drivers use. Go along and have a chat, see if they stock spares for the make of car you're thinking of buying. Do they stock a good range? Are they knowledgeable about the products?

## Go slow and survive

Remember that when you're starting out in this sport it will take a while for your performance to come up to that of the car, even simple ones need time to learn to drive to drive initially. Be realistic about your level of competence before investing in something really fast. You can have more fun with something a bit slower that will survive the odd accident in one piece, than a quick car that you're constantly fixing because you've crashed it!

## Further reading and surfing

The one thing you'll always be short of when starting out into the RC racing world is the right information. There can at times appear to be mountains of technical gobbledygook when all you want to know is where the 'on' switch is! So try these...

## RC car magazines

There are good quality magazines available that give both a technical insight into what new products are about and where and how to go racing – they make excellent reading.

## Go on-line

The Internet is a mine of information from sources such as the BRCA website ([www.brca.org](http://www.brca.org)) from which you will find links to the majority of manufacturers, loads of clubs and section specific websites. Social networking sites are very responsive to questions you may have, go on any good search engine and you'll find plenty of sites.

## Friendly advice

However we still recommend the shout across the pits, or the quiet word with one of the experienced racers at the local track as being the best beginners' advice. They all started where you are now and are keen to pass on their experiences for you to use – for free!

# How to use this book

There are very few rules in it – the rules that apply to you for the majority of your racing are the Association General Rules on pages 12 – 14. Those General Rules, in conjunction with your local club rules, form the backbone of the sport and you need to read and ensure you understand them.

There are very few rules in it – the rules that apply to you for the majority of your racing are the Association General Rules on pages xx – yy. Those General Rules, in conjunction with your local club rules, form the backbone of the sport and you need to read and ensure you understand them.

This Handbook is designed to give you the very basics of what you need to know to safely enjoy our sport, it is the tip of a very large iceberg.

You will find an introduction to some of the classes raced, but by no means all – the ones listed in this book are the classes currently raced at National meetings, there will be lots of other classes raced locally. Just because a class isn't listed in here doesn't mean we don't recognise that it exists and is great racing, just that a group of racers – just like you - haven't got together and organised a series of nationwide events for it... yet...

You will find links to the Construction and Procedural rules for each National class in their sectional notes.

## How rules are applied

The Association General Rules contained in this book apply to us all at most of the race meetings we go to – it will clearly say if it doesn't!

Section / Class rules apply at National meetings and other events organised by a section committee as they see fit.

Section / Class rules do not apply at Clubs – unless a club chooses to apply them, in that case it is entirely the clubs choice, either way.

## Important Note

The Association General Rules are designed to ensure we all stay safe, both literally and legally. They may appear unusual in some areas and some statements may appear to be 'stating the obvious' too.

### **BUT**

They are written like this to ensure our insurance policy, procedures and rules conform to the Law of the Land – make sure you have read them as they DO apply to you.

# The Structure of Your Sport --

## How it all works

In this article we will try to give you an insight how the association is structured, what's available, who to ask, and how problems are dealt with. It's often heard 'The BRCA do nothing for me'. This can normally be translated into two areas -- I don't know what the BRCA does for me and -- I don't know how to get the BRCA to do something for me.

The first point to remember is that there isn't any great big organisation anywhere pulling the strings. We don't have plush offices, company cars or expense accounts. We do have a collection of unpaid volunteers who give up their time to ensure that our sport continues to grow and be run in as co--ordinated a manner as possible for us all to enjoy.

### **Making it work for you:**

This is really simple, all you need to know is who to contact about what. Outlined below is the information you need. Firstly ask yourself a question – is my problem directly to do with the class of car I'm racing or planning to race? If the answer to that question is a 'Yes' then start your request for information with the Section Secretary that deals with your class. If the answers 'No' then read down the list of officials in the handbook and aim your question at the one whose tasks seem closest to your problem, if its not them they will know who to ask.

### **The Committee Structure**

The association is constructed around 2 distinct committee structures.

Firstly we have **Section Committees**. These deal with the running of the national competitions and the managing of all the rules for the class they represent. e.g. the 1/10 Electric Circuit Committee run the national championships for that class and manage the sectional annual general meeting where YOU, as a BRCA member, propose and vote on both the rules, and the people you want to manage them for you.

If you have a question about a particular class of racing the best course of action is to find the section secretary for your class and give them a call or send them an email. It is section officials who deal with all aspects of the racing conducted within that section. If you have a question, complaint or wish to appeal against a decision, you must start with the section secretary, and the matter will be discussed at their next committee meeting. If they feel unable to deal with it or you are not satisfied with their response then it can be referred to the Executive Committee to deal with.

**The BRCA Executive Committee:** The executive committee is made up of 2 people from each section (normally the section Chairman & Secretary) plus the people outlined below. The Executive Committee meets about 6 times a year to discuss how the Association business is progressing, what we need to do for the future of our sport, how each of the sections are progressing and to discuss anything they would like assistance with.

### **The Chairman – Dave Waters**

Dave will deal with any query that one of the other committee members hasn't been able to deal with or has referred to him; don't start here unless you feel the issue is very complicated or very delicate.

**The Vice Chairman** -- John Russell.

John is essentially the chairman's right hand man; his role is to assist the chairman as necessary, so the Chairman may delegate some issues to John. John runs the Sporting Committee that oversees how our National meetings are organised.

**Secretary** -- Darren Newton

Darren is the person to whom all correspondence, other than membership information, should be sent. If you have an item for discussion at an Executive meeting send it here.

Address: Unit 24, Wolseley Court, Staffordshire Technology Park, Stafford ST18 0GA

**Treasurer** -- Jim Spencer

Jim deals with all aspects of the association's financial arrangements, the administration of the insurance, relationships with the RACMSA and the sports council. If you have questions about these issues speak to Jim.

**Public Relations Officer** -- Alan Leighton

The Association's public relations (PR) activities are co-ordinated by Alan. Alan represents the sport at several shows a year and ensures that the sport is represented in the best way possible. If you want some help promoting the sport locally, ask him.

**Membership and Club Liaison Officer** – Grant Williams

Grant is our Club Liaison Officer, dealing with the queries from clubs and visiting them up and down the country. The query could be any subject that doesn't obviously fall under the roles above, from help with access to financial grant information through to problems with a member's behaviour and anything in-between.

**Editor** – Peter Winton Peter posts to the BRCA website and puts together the BRCA Handbook and the Section Handbooks. If you have something to tell the RC world through our website, or have found an error in our publications or website, get in touch with Peter.

**Chief Timekeeper** -- Gareth Bevens

Gareth oversees the timekeeping for all the major international race meetings the association organises (IFMAR & EFRA events) and also is the section timekeeper for national's in two classes. Got a query about the details of timekeeping? Ask Gareth.

**EFRA / IFMAR Liaison** -- Janet Hill Janet is the focal point for information coming into the Association from EFRA & IFMAR, contact Janet for your EFRA licence. All EFRA / IFMAR event queries must be made via your Section's EFRA rep.

**Electric Board** – Secretary – Paul Worsley

The Electric board is a sub committee organised to ensure parity of equipment between the electric racing classes, check out their published lists of homologated equipment on [www.brca.org](http://www.brca.org) or contact Paul with any queries the lists don't clarify.

**Safeguarding Officer** – Mark Trinder

If there is anything that you are unsure about with regards to safeguarding issues, information and guidelines for you from relevant authorities, Mark is here to ensure that all members, young and old, club, regional or National, are catered for.

### **Doing your Bit!**

Remember that the BRCA is only a collection of volunteers all doing their bit to ensure our sport continues to grow and develop, you should be proud of the fact that this collection of people are recognised as running one of the most respected RC Car Associations world-wide. However the most important point is this - all Officials are just ordinary racers who give their time for the sport they love, they are no different from anyone else, and all members should consider what they are putting back in to the sport. You should all help out in some way, at some level. It doesn't matter if its putting the track out at the club or organising a world championship, your contribution is at least as important as any of the other people involved in OUR sport.

### **Ask, don't guess!**

One of the wonders of the internet age is the speed with which information can now be transmitted; this is great if the information is accurate and a major problem when all too often it isn't. No official in any section minds the phone call or email asking 'Can you clarify...' That sort of call can save hours of frustration all round, so if you're not sure (especially if it's something you intend to circulate) please use our contact system [www.brca.org/contact](http://www.brca.org/contact) - if the person you ask doesn't know they will know someone who does!

### **Changing a rule**

First bit is a simple statement - The BRCA doesn't create rules. The Section Committees don't create rules. The Membership creates the rules and the Officials you vote in enforce them. Any one of us (you, your club mates, an official - any of us) can change or create a rule. Or more accurately we can 'propose' a rule or rule change. This is done annually at the Annual General Meeting (AGM) for each racing Section. If, when your proposed change is raised at the AGM, the majority of those present agree with you (after the matter has been explained and quite possibly discussed – even possibly amended) then a changed or new rule goes in the book – it's as simple as that.

### **But**

You need to know how to make that process work, so here goes:-

Firstly; discuss it with other racers at your club, especially those that might have been to a few other clubs or raced in other classes. They may well come up with an observation that's of benefit, or let your idea get kicked around on one of the discussion forums on the internet. Secondly; is this something that you only need to change to suit your club?

All too often a discussion comes up about a club class and 'the BRCA rules say....' gets quoted. A couple of pointers here - the BRCA General Rules are the only ones that MUST be adhered to at your club. If you want to modify or even create a set of rules for the classes of cars your club wants to race that's perfectly fine – after all that's exactly where most new classes come from.

So if you've got this far, you have a new rule proposal to make, you've not been shot down in flames by your club mates, and it's something that needs changing for the class nationally or the sport as a whole. To make this change this is what you need to do.

If it's a change to the Constitution or the General Rules write to the BRCA Secretary. Write your change down clearly, noting the existing rule number (if applicable) and stating your membership number and have it 'seconded' by another member who also wants to see the change happen.

If it's a change to the rules for your class, (or for the Electric Board) it's exactly the same procedure but write to the Section Secretary for your class or the Electric Board Secretary.

Try and get to the AGM, all too often good ideas get buried because the proposer isn't at the meeting to explain and discuss their idea. Don't leave any of the above until the last minute, proposals need to be received well before the AGM, at least a month for the Main Association Rules, and you'll need to check with Section Secretaries when they want to receive rule proposals by.

## Fellows of the Association

The B.R.C.A. honours members who have made an invaluable contribution to life within the Association by making them Fellows of the Association.

Mr Jeff Lindstrom  
Mr Paul Pagdin  
Mr Bob Errington  
Mr George Land  
Mr Eric White  
Mr Dennis Jones  
Mr Mike Chilvers  
Mr Mick Hill  
Mr Chris Hardisty

Mrs Maureen Smith  
Mr John Robinson  
Mrs Muriel Russell  
Mr Kieth Plested  
Mr Brian Harris  
Mr Bob Harley  
Mrs Jacquie Rowcliffe  
Mr Richard Stitson



# Association Officers

## Executive Officers

**Chairman:** Dave Waters

T: 0121 602 0136 M: 07973 270377 E: chairman@brca.org

**Vice Chairman:** John Russell

T: 01422 377430 M: 07798 846930 E: vicechair@brca.org

**Secretary:** Darren Newton

T: 01889 566588 M: 07970293803 E: secretary@brca.org

**Treasurer:** Jim Spencer

T: 01270 842043 M: 07976 623772 E: treasurer@brca.org

**Membership and Club Liaison Officer:** Grant Williams

T: 01782 769924 M: 07910 306460 E: membership@brca.org

**PRO:** Alan Leighton

M: 07899032944 E: pro@brca.org

**Chief Timekeeper:** Gareth Bevens

M: 07976 975098 E: events@brca.org

**EFRA/IFMAR Liaison:** Janet Hill

T: 01403--257969 E: efra@brca.org

**Child protection officer:** Mark Trinder

T: 07746 605010 E: safeguarding@brca.org

**Editor:** Peter Winton

T: 01332 556730 M: 07836 625937 E: editor@brca.org

**Scottish Rep:** Derek Kerr.

M: 07792 335337 E: brcascotland@brca.org

**Welsh Rep:** Chris Hardisty

E: wales@brca.org

**Correspondence to the Secretary at the address above.**

## Section Officers

Each section also has its own officials – see ‘Sections and Section Officials’ Each section also has its own officials – see ‘Sections and Section Officials’ on pages 22-49.

# General Rules

These Rules are applicable to all sections

## 1. Members

It is accepted that all BRCA members have read the rules, contained within this publication, understand them, and agree to be bound by them during the period of their membership.

## 2. Competitors

All competitors and all marshals at BRCA events and at all BRCA Affiliated Club events and any other event organised by said organisations must be BRCA members. It is permitted for potential new members to 'visit' affiliated clubs, for club events only, on three occasions before BRCA membership is required. The 'visitor' status is extended to drivers from overseas, and also includes sanctioned events, they should be members of their National Association. It is a requirement that membership cards be produced at events when requested by the event officials.

## 3. Marshals

It is an accepted part of Radio Controlled (RC) model vehicle racing that models differ from fullsize vehicles in that the operator is remote from the vehicle and the operator looks at the RC vehicle and does not see the potential view from it. It is the Marshals responsibility to ensure their own protection before leaving their designated marshals post to assist a RC vehicle. All marshals must wear "Hi Viz" vests/bibs/jackets. The Marshals must wear this apparel correctly. It is part of the race organiser's role to determine, to their best ability, a safe marshalling point for you. However it is every marshal's responsibility to report to race control if they feel that their post is inadequately protected.

## 4. Safety

**GENERAL:** Competitors **MUST** consider the safety of marshals, spectators, and other drivers at all times. No car shall be constructed or used so as to be dangerous to persons. All cars must have a positive means of stopping fitted and working. All members must comply with instructions and recommendations issued by product manufacturers, subject to any further restrictions in any BRCA rules. If you are unsure about any product of a chemical nature (cleaners, aerosols, additives, etc) then ask to see the COSHH report for the product. If there is no COSHH report on the product then we recommend you do not use it.

All Sanctioned BRCA Race Events must carry out an On-site Risk Assessment prior to the Drivers Briefing. The Risk Assessment must be sent via email to [riskassessment@brca.org](mailto:riskassessment@brca.org) within 3 days following the event

**BATTERIES:** In the interest of safety, any battery pack(s) carried on a model car must be able to be disconnected quickly without the use of tools in an emergency. Direct soldering is not allowed.

All Lithium-based drive batteries must be in a 'closed' LiPo sack when being charged or discharged. This applies to any discharging procedures, except during a race or when using organiser supplied resistors to correct voltage. LiPo sack is defined as a receptacle designed for the purpose of charging LiPo/LiFe batteries and is of a suitable construction so as to contain a LiPo/LiFe fire. Sacks must be obtained from a recognised supplier to the UK RC industry.

Charging of Lithium based batteries (LiPo, LiFe etc.) at all events and in all Sections must be strictly in accordance with the procedures detailed in BRCA Electric Board rules. These procedures are covered in Electric Board rules 3.6, 3.7, 3.8, 3.10.

'Over' Charging of Lithium based batteries is potentially dangerous and maximum charge cut-off voltages must be strictly adhered to. The maximum charge cut-off is based on 4.20v per cell

(LiPo), 3.70v per cell (LiFe) for cells connected in series. Therefore the maximum charge cut-off voltages allowed are:

- 1S -- 4.20v (LiPo), 3.70v (LiFe)
- 2S -- 8.40v (LiPo), 7.40v (LiFe)
- 4S -- 16.80v (LiPo), 14.80v (LiFe)

Effective from 1st. April 2017:

ALL Lithium based 'drive' batteries used in ALL Sections must have a hard, protective case that completely envelopes the cell(s). The case should be made from ABS or a similar strength material. The two halves of the case must be factory sealed in a way that any attempt to open the case will destroy the case. The only opening in the case that is allowed is for exit wires or 'pin type' connectors.

Lithium based batteries that are used for powering receivers, servos or other devices, that have a capacity exceeding 10Wh., must have a 'hard case' (as detailed above) or must be totally enclosed within an equally strong casing that is within the original design of the car that prevents any accidental damage to the battery during racing or maintenance.

Any member found not complying with these procedures will be removed from the meeting and have their membership suspended immediately.

## 5. Officials

At BRCA sanctioned events (Internationals, Nationals, Regional's etc.) the BRCA Steward holds responsibility for the safe running of the event. The BRCA steward will normally be the highest-ranking BRCA official present. In the event of a BRCA Executive officer attending an event, that responsibility is passed to the highest-ranking officer of the section organising the event present. By formal agreement, i.e. in writing, either in meeting minutes, or at the event in question the stewardship can be passed to another suitably qualified person. Club committees should adopt the same process. Stewardship would normally rest with the Club Chairman, however clubs are recommended to minute with whom stewardship of events rests, or is passed to, in the event of absence.

## 6. Tracks

Tracks must have an outer perimeter sufficient to contain the RC vehicles being operated within it. At all BRCA sanctioned events, the BRCA steward is responsible for designating the track area, which may include pit lanes and start/finish areas. The only persons allowed within the aforementioned areas during controlled practice and racing procedures are marshals and other relevant race officials, and mechanics are permitted within a designated area, and all of these persons must be BRCA members or a competitor. Track markings must be designed so as to minimise the possibility of R/C vehicles leaving the confines of the track. This rule does not differentiate between permanent and non-permanent facilities, it is the organiser's responsibility to determine the suitability of their facility for the class of RC vehicle being operated. It is all competitors' responsibility to report any issues with track safety to race control.

## 7. Drivers' Briefing

All sanctioned meetings (e.g. Internationals, Nationals and Regionals etc.) must have a drivers' briefing before the start of the racing, all drivers are required to attend. The drivers are responsible for communicating all information to anyone else concerned (e.g. mechanics, guests) The drivers briefing must contain: Format of the event; Designation of the track area; Location of safety equipment; Location of Fire Exits; Explanation of any local rules; Marshalling requirements; Identification of Officials; plus any other information the organisers deem necessary.

Note: If a meeting is over more than 1 day, and consists of separate events, than a drivers briefing should be conducted before the racing commences each day.

## **8. Equipment**

All events are required to have the following equipment: First aid kit (for self administration), appropriate fire extinguisher, accident book (in which all injuries must be recorded). In addition the organiser must know local procedures for emergency services and have a means of contact (e.g. a mobile phone).

## **9. Smoking**

Smoking at BRCA events and BRCA sanctioned events is prohibited, other than in a designated area.

## **10. Radio Equipment**

The BRCA recognises the UKRCC as the national authority for the UK on radio equipment. The BRCA will work within the rules and guidelines specified by the UKRCC. RC Equipment must be used in accordance with the manufacturers guidelines. Any modification to any component that may affect performance and/ or power of original equipment is specifically not allowed. This applies especially to the aerial and power source. Only published frequencies are allowed (see Handbook). The reversal of crystals is not allowed.

## **11. Records**

All clubs and national event secretaries are required to keep complete membership and entry details respectively; these details must include full names and addresses, and are recommended to include emergency contact phone numbers. The relevant section official must keep entry details for sanctioned events and clubs keep records of attendance at meetings, (e.g. heat list/entry forms) It is a requirement that all accidents must be reported to the BRCA officer responsible for Insurance (currently the Treasurer) as soon as possible.

## **12. Conduct**

Any driver, representative, mechanic or friend of a driver found to be under the influence of drink or drugs or behaving abusively will be expelled from the meeting (a meeting may be one or more days and consist of more than one event/class). Affiliated clubs must keep an 'Incident Book' in Race Control. Any incidents that are likely to bring the sport into disrepute should be logged and the information passed onto the Club Liaison Officer, for presentation to the Executive Committee as required. Any individual subject to disciplinary action (see Rule 9 - Constitution) shall be notified in writing, the notice will also be forwarded to all association officers and club representatives.

## **13. Vehicle Scope**

The BRCA will not recognise a model vehicle as being suitable for Radio Control that is more than any of these measurements; 1 metre long, 20kg in weight or a maximum of 35cc engine capacity.

## **14. Electronic Driving Aids**

Steering and driving/brake can only be operated by direct action of the driver using the Radio. The use of traction control devices, active suspension devices and any steering control aided by gyroscopes, 'G'-force sensors or devices giving a similar effect is strictly forbidden. Sensors are only allowed for the purpose of passive data recording and not for adjusting the performance of the car whilst in motion.

It is not allowed to use any form of telemetry with active transmission, which in the opinion of the event officials or steward, is judged to give a competitor an advantage during any race.

Clarification: It is not allowed for any radio/wireless signals to be transmitted from the car to an external source during the race that is judged to give the driver a competitive advantage during that particular race. Drivers found using any of the above forbidden items/devices will be subject to disqualification from the event where the items are used and can be banned from all BRCA events for a period of up to 10 years.

# The Serious Bit – Insurance & The RC Racer

The Treasurer of the BRCA is responsible for the administration of the public liability insurance for our membership. He is quite regularly asked details about why it's necessary, what it covers, and why it's becoming a really important area of today's society and how it affects YOU. **The most important point is what it is for:** Public Liability insurance covers the **individual or club** against claims made against them for injuries or other damage caused to members of the public i.e. any other racer (who at that moment isn't involved in the race), a spectator, or other bystander or property belonging to them.

It is a sad fact of modern living that an 'accident' is no more, they just don't happen any more, we now have 'incidents' and 'incidents' are always somebody's fault. You might think this is to allow solicitors to make a living, and for people to think about ever more amazing ways to get 'compensation'. Nearly every day we see adverts on the television for specialist legal firms offering a 'no win no fee' service for compensation claims and for injuries received. These 'experts' are the people you end up dealing with when things go wrong.

**Rule No. One** - Model Car Racing is Fun.

**Rule No. Two** - Fun does not mean irresponsible.

## Is it really necessary?

Well, that depends on your outlook doesn't it?

Insurance is only necessary when you need to use it. However, there are about 15,000 racers in the UK, plus countless thousands just using RC cars for fun. We deal with about 4 cases in an average year for the BRCA membership of some 8,000, so the odds are about 2,000 to one that you will be involved in an accident in the next twelve months that results in an insurance claim.

Pretty low, but if you have a go on the lottery that's 14,000,000 to one!

A race director / club chairman will insist that you produce your membership card, or prove that your insurance is valid, before he lets you race. Can you imagine the problems for him if he allowed someone without insurance to compete and injury to a member of the public or another racer happened?

Remember, it is their responsibility to ensure that they and the club and all the racers present are insured and all protected from personal liability – they are not being awkward they are being very sensible indeed. Respect it – or race somewhere else or not at all. If the sport ever became uninsurable then there wouldn't be any racing as nobody (in their right mind anyway) would be willing to put the events on or run a club for it.

## **The Cover is:-**

Public Liability Insurance of £10,000,000. That includes:

Cover for use: anywhere at any time in the UK.

Cover as an organiser as well as a competitor.

Cover for organisers no matter where or when the event is held in the UK.

## **Always:**

Use your car in a responsible manner. Never use it somewhere the Law (or local Bylaws) don't allow – the street being the normal one seen. If in doubt as to the suitability of a site, go with your doubts and go somewhere else.

## **How it affects who:**

### **The Fun User**

You may be thinking 'I don't race therefore I have no problem'; please think again.

Tracks have to have a barrier / fence so the cars are restrained from getting to the public and visa versa, driving one in the park has no safety features. There is nothing to stop the car if you get interference to your RC equipment and there is nothing to stop the people who haven't seen or heard what you are doing getting the way. This is probably why there are more accidents involving relatively slow, but quiet, electric cars than the fast, but noisy, internal combustion (gas) cars. In this kind of situation it is always the responsibility of the user - you are directly responsible for your, and your car's actions.

### **The Club Racer**

Most claims result from club meetings. They are normally of the type where somebody's car has left the track and injured, in a relatively minor way, another racer or some equipment or some part of the event hardware (rostrums / staging etc.) has failed. The injured person or venue owner then claims for loss of pay or repair costs and any inconvenience.

See the bit about club chairmen to see how and where the responsibility lies, but don't forget that YOU the racer is where the initial claim will start. Just because someone else is organising things doesn't mean that you are not responsible for your own actions.

### **The National Racer**

Claims resulting from Nationals are generally an exaggerated version of the club types. The accidents tend to be faster and more severe for two reasons; the cars are travelling faster and there is normally an enhanced safety fence / safety procedure which the accident has managed to overcome. However there are proportionally less claims, probably because the safety systems manage to contain 90% of the problem. Again the ultimate responsibility is the race organiser/ BRCA Steward, but as with the club racer the individual is always responsible for their actions.

### **The Race Director / Club Chairman**

This is where the buck stops. At all meetings other than Nationals where the rules state 'BRCA Steward' all claims will involve the Club Chairman or the Race Director. In the event of any claim this person will be involved, as he is the person deemed to be liable for the safety of the event and the persons taking part in it. (This is the same in any other sport or public event). The race director must be satisfied that everyone is in a safe environment and that additional hazards are not allowed to be created i.e. Closing a track / stopping a race if a track repair is urgently

required. However most of the time, the race directors / club Chairman's role is just to confirm the basic facts about the accident, to collaborate the claim and to confirm any other issues that may have had a bearing on its outcome.

## **Big Meetings – Nationals & Above**

The buck here rests securely with the 'BRCA Steward' that is the highest ranking committee member present. It is their responsibility to ensure that all 'reasonable precautions' are taken to ensure the racer's and the public's safety. If they have any doubt they will halt the meeting until the problem has been resolved. Again the potential problems are just increased from the club situation with the added questions that large numbers of the public can cause.

## **Marshalling**

At all the above meetings (apart from the fun user of course), marshalling is an accepted part of our sport. We race and then we marshal is the built in ethos, though of course ability and age are sometimes taken into consideration.

It is also accepted that racing tracks, of all sizes, are dangerous places to be. However somebody will determine a safe place to marshal from (it may be self determined at a club or by an official at a National – it doesn't matter) while you are at your marshal post/point the insurance cover applies. But when YOU decide to leave that post and retrieve a car then do be aware that YOU have made that decision – it's then your responsibility to keep yourself safe.

You cannot blame and therefore claim off yourself, when you get it wrong.

If you read nothing else in the Handbook, read the General Rules (page 12)

## **Race Equipment (batteries, motors etc.)**

There is only ONE BRCA rule regarding equipment that is applicable to the insurance cover. General Rule 13, Vehicle Scope – The BRCA will not recognise a model vehicle as being suitable for radio control that is more than any of these measurements; 1 meter long, 20kg in weight or a maximum of 30cc engine capacity.

That's It.

All too often we get emails / phone calls – sometimes from quite experienced people - asking (for example) "will the use of XYZ non homologated batteries invalidate the insurance"? Nope. Homologation lists are for Nationals and Sanctioned Events use. A club can choose to run to them if it so wishes, but that's up to them, but either way round they have no effect on the insurance cover what-so-ever at any level of event, including the nationals too – failing scrutineering wouldn't invalidate your cover for example. Anybody tells you different point them at this document or ask them to check.

## **Getting this cover**

If you're reading this as a BRCA member you already have it, if not then read on:-

You may already have it anyway, if you have public liability insurance for anything else it may possibly cover you, but please check as most of the time it will not, and ensure you mention 'Radio Controlled Cars' and not just 'Model Cars' as there is a huge difference to the insurer!

It may come with the building your club hires; if it does it probably only covers the racers whilst in the building. Sounds daft we know, but the club members concerned need to know they have no cover when using their vehicles elsewhere.

Insure the club. This works fine and most high street brokers can arrange this. Ensure that the club members are covered as individuals (see points above) and be careful if it appears cheap.

One local club found out in the worst way that their cover was as a 'model car club'; i.e. for building plastic kits and not for 'Racing Radio Controlled Model Cars'  
Join the BRCA as an individual, or by joining an Affiliated club, or by Affiliating your club. We are not insurance experts but our brokers are! You are now insured to use / race your vehicle anywhere in the UK.

## **Club Affiliation**

To be sure that a Club is protected in the event of an accident at the club, Clubs should register with the Association and insists that everybody who races, officiates and helps run the meetings is an Association Member. The method that they do this is down to them. The club may insist that everybody joins individually through [www.brca.org](http://www.brca.org), or the club may do the administration for their members – either is fine. Contact the Club Liaison Officer ([clubliaison@brca.org](mailto:clubliaison@brca.org)) for more information or if you have any questions.

The reason for doing this is that the club officials are then sure that they are protected in the event of an accident at the club that results in an insurance claim. (See the other Insurance notes for further details)

Insurance is a spectacularly boring part of our exciting sport, but it is vital to its continued success, and it isn't a subject that is going to go away. At some point you will either be involved or see something that will make you realise its worth, just ensure that you realise how worthwhile it is AFTER you have it.



# BRCA Insurance

## Public Liability Insurance Insured:

1. The Committee, all permanent & temporary members of the British Radio Car Association each of whom is separately insured.
2. The cover includes the use of all classes of radio controlled cars & motorbikes anywhere in the UK and whilst temporarily abroad in Europe. (the host club should provide cover).
3. Member--to--member liability is included for both personal injury & property damage, but excludes damage to models, radio gear & ancillary modelling equipment.
4. Demonstrations & displays sanctioned by the BRCA or Committees of affiliated clubs will be automatically covered. (Demonstrations at school fetes or for charity work etc.)
5. Potential new members to clubs are covered for up to 6 weeks (three meetings) in any one year without additional premium.
6. An indemnity is given to leased premises including land & property owners & to Local Authorities. (Covers damage to buildings and or ground hired by the BRCA. Most public buildings, however, will have their own insurance cover, which will be part of the hire contract.)

Policy Details Insurers:	Travelers Insurance Company Limited
Policy Number:	UC CMK 3961159
Period of Insurance:	One year
Limits of Indemnity:	Public Liability £10,000,000
Territorial Limits:	UK, Northern Ireland, Channel Islands, Isle of Man
Policy Excess:	£50 (Members must pay the first £50 of any Claim)

**Should you have any queries regarding insurance please contact the BRCA Treasurer -- Jim Spencer on 01270 842043 or 07976 623772.**

# BRCA Club Manual

**Thinking of starting a club? Running a club already? Want some help and advice on how a club should be run? Then get the new BRCA Club Manual. Produced by those who run clubs for those who run clubs, and it's available free!**

The BRCA Club Manual is available as a free download from the BRCA website ([www.brca.org](http://www.brca.org)) in PDF format together with an appendix on safety signs as an Excel spreadsheet! This is to ensure that formats are easily accessible by all, also assuming that you may need to modify safety signs to suit your particular requirements. To read a PDF file you will need Adobe Acrobat Reader, this is a freely available download off the Internet if you haven't already got it ([www.adobe.co.uk](http://www.adobe.co.uk))

Please bear in mind that this document isn't designed to teach you how to suck eggs, there is a considerable amount included that you hopefully already know. It would be surprise if there weren't something new to everybody, certainly many of us have learnt a lot from researching some of the topics.

It's a sad reflection of our times that this sort of thing is even necessary but we are seeing an increasing trend towards the 'sue now ask questions later' mentality and it's important that you understand exactly what you're taking on and how to ensure you protect yourself if it goes wrong.

You will read about activities being cancelled because people 'don't want the responsibility'. This isn't anything new and certainly isn't anything to worry about. Remember we're doing nothing different to anybody who went before us, it's just that the world is more aware of what that actually entails.

Take your time to read the Manual, or certainly the relevant bits to you, and send some feedback. It's down to us all to ensure our sport progresses and your bit of info and help could save somebody else time, money or having the accident or systems failure you did.

The document is intended to be updated, and news of these will be on the BRCA website.

**Jim Spencer**

BRCA Treasurer/Club Manual Editor

# Guide to Clubs

Everyone in every sport starts at a local club whether they run, cycle, play ball sports or shoot arrows as an archer. Club racing is also the lifeblood of the BRCA and where every British racer who has won a National, European or World Championship started their racing career.

With over 200 active clubs all over the British Isles there will be one near where you live. Each club will race one or many of the BRCA model racing classes. Clubs with tracks in halls, schools and sports centres will race the electric classes. Clubs with outdoor facilities will usually race the bigger electric classes and the IC (internal combustion or gas engine) classes. Some clubs have tracks the envy of the world that are, in model terms, the equal of Silverstone, Brands Hatch and Welsh rally stages!

Our website – [www.brca.org](http://www.brca.org) - will have a list of the clubs affiliated to the BRCA. Use the contact details for the racing Sections in this handbook to ask someone about a club, or contact the Club Liaison Officer ([clubliaison@brca.org](mailto:clubliaison@brca.org)) and ask for information. Your local model shop will know these clubs and others who regularly meet in your area. Social media is also worth searching for interest groups who can be contacted for information.

Your local club is the best place to see model motor racing in action. Join the club and the BRCA when you have decided to take up our great sport. The club will have racers who can give you advice and tips to make your racing the best it can be.



Grant Williams joined the BRCA in early 1992 while racing Off Road Rally Cross Buggy's at the Rosendale Models Car Club. In 1999 he became interested in 10th IC on Road, he became PRO of the section and then he went on to serve for 3years as the 10th IC on Road as Chairman.

Grant is in contact with clubs as he is the Club Liaison Officer. Part of his role will be to seek what the club membership needs and how to make changes to cater for this. Please contact him to discuss your ideas or invite him to your club.

# Section Information

The following pages contain information about our racing classes. Each Section's Construction and Racing rules are available on the BRCA website at [www.brca.org](http://www.brca.org) - click on the section heading and select the class you are interested in. All these Rules are created and voted in by the Section members, for our current National Championship Series.

These classes have changed over the years and continue to evolve, through input from the current competitors.

Always remember that every class listed at some point started as a few racers at one club creating something new, by generating interest in their new idea it grew over time until what you see here exists.

The class you are racing at your club may well be that new idea that one day will become the class that thousands of people are racing IF you make sure that your good idea get circulated. If you find something that works make sure you let the rest of the racing community know.

# 1/8th Circuit

Model cars come in many different shapes and sizes but with acceleration times of 0 to 60 miles per hour in less than two seconds, and top speeds in excess of 75 mph is it any wonder that 1/8th gas powered radio controlled model cars are considered the formula one of all radio controlled model car racing? Racing 1/8th circuit radio controlled gas cars will add a whole new meaning to your understanding of the word excitement.



Once you have driven a 1/8th car and experienced its awesome power, and stunning cornering speed, you'll never be satisfied with driving anything else, and be back for more, again and again and again. Your 1/8th scale I.C. powered four-wheel drive car can be built from one of the many available kits now on the market. Powered by a racing 3.5cc two stroke engine capable of delivering over two brake horsepower, you are just minutes away from the most mind-blowing experience in model car racing.

Your car complete with engine will be a high tech 1/8th scale model racing car. All cars have front and rear independent suspension controlled by fully adjustable shock absorbers and springs. In addition you'll have disc brakes and automatically shifting transmissions. All this topped with a sports car style bodyshell painted to your own individual team colour scheme and designed for you to get the best from your car both mechanically and aerodynamically.

1/8th racing is a great activity and hobby for all the family to participate in, and as well as racing as individuals, many father and son teams compete in racing events. Once you've got used to the thrill of driving your own car around one of the purpose designed scale circuits located throughout the country you'll be able to compete in your first event. Following a practice session you'll have tuned your car and engine for maximum performance. With your engine running you head for the drivers rostrum, whilst your pitman puts your car on the track for one of your qualifying races. Having qualified for a final you wait on the drivers rostrum as tension mounts waiting for the flag to drop. Accelerate hard into the first bend as you jockey for position with your fellow racers.

As the race settles down you'll have to think about the first of your scheduled re-fuelling pit stops. Head down the pit lane to your pitman, a full tank of fuel taken on in seconds, and you blast back into the action. Well, could you handle it? If the answers yes, then come 1/8th I.C. racing!

## 1/8th Circuit Officials

**Chairman:** Andrew Mollett  
M: 07545 562781 E: 8C.chair@brca.org

**Vice Chairman:** Vacant

**Secretary:** Ian Billett  
M: 07966936958 E: 8thcsec@brca.org

**Treasurer:** Phil Carr  
E:8c.treasurer@brca.org

**PRO:** James Healey  
M: 07946 203823 E: 8c.pro@brca.org  
Micheal Walton:  
E:8c.pro2@brca.org

**EFRA Rep:** John Russell  
M: 07798 846930 E: vicechair@brca.org

**Safety Officer:** Ian Billett  
M: 07966 936958 E:8thcsec@brca.org

**Drivers Reps:**  
John Carr  
E: 8c.rep@brca.org  
Andrew Hastings  
E: 8c.rep2@brca.org  
James Healey  
E: 8c.pro@brca.org

**Chief Scrutineer:** Vacant

# 1/8th IC Rallycross

1/8th Rallycross racing is fast, colourful, action packed and extremely competitive.

With racing at actual speeds of around 50mph, on a variety of surfaces, the racing action is guaranteed to be exciting. 1/8th Rallycross (or Off Road) is one of the most popular classes of model car racing. In recent years the popularity of the nitro engine has increased immensely, and as a result,



Rallycross has seen many new drivers start racing and indeed many drivers from other classes have been converted. Rallycross is considered to be one of the friendliest class of model car racing. Whilst on the track the racing is very competitive between all drivers, however, once back in the pits, you will often see drivers of rival cars openly helping each other and generally having a laugh and a joke.

The cars that are raced are all four wheel drive powered by a 3.5cc nitro fuelled engine with double disc brakes to bring them to a halt. All feature fully independent suspension, which is adjustable to suit the driver and track conditions. With different spring tension rates, damper settings, anti-roll bars settings, and adjustable suspension geometry to fine-tune the car's handling. Different tyre patterns and compounds complete the set-up.

The construction rules laid down by the BRCA limit the fuel tank size to 125cc. This gives sufficient fuel to race in the 5 minute qualifying heats, but with finals of 20 or 45 minutes long, it is necessary to have fuel stops. For this you need to have a good mechanic to re-fuel your car, and with the closeness of the racing some times the finals can be won or lost on the pit stops. One of the nice things about Rallycross racing is that you can buy, off the shelf, exactly the same specification equipment that the top drivers are using. This in turn leads to a very level playing field, and it is the skill of the driver that decides the winner.

The BRCA runs a National Championship, which is open to any member of the BRCA. Within this National Championship there is a Clubman's Championship, a Junior Championship and a Over 40s Championship. All drivers are entered in the National Championship, however, the top 24 drivers from the previous season and any driver who makes more than 1 "A" final during the year is not eligible to compete in the Clubman's Championship. Junior drivers must be under the age of 16 on the 1st of January of the current season.

## 1/8th IC Rallycross Section Officials

**Chairman and EFRA Representative:** Kevin Griffin

T: 01584 877422 M: 07967 126451 E: k.griffin123@btinternet.com

**Treasurer and Entry Secretary:** Suzanne Griffin

M:07849 068275 E: k.griffin123@btinternet.com

**Secretary:** Mark Stitson

E: mark.stitson@yahoo.co.uk

**Website Co-ordinator:** Matthew Box

M: 07830 215213 E: matt@rcpb.co.uk

**Chief Scrutineer:** Andy Conroy

M: 07967 649685

**Clerk of the Course:** Lewis Millman

T: 07984 226979

**Liaison Officers:**

Steve Shakespeare M: 07817 486467

Richard McKenzie M: 07970 324256

Helen Cole: M: 07973 405536



# 1/10th Electric Circuit

Hello and welcome to Electric Touring car and F1 racing.

1/10th scale, electric powered touring cars are 4-wheel drive machines capable of speeds in excess of 70mph making them the fastest electric power class. They are made from carbon fibre and feature advanced electronics, making them one of the most tunable classes. F1 is a new class within our section, but they share the same technology as the Touring Cars and are just as tunable.



The national series for our section is divided into 2 different series. The National series over 5 rounds, and the Clubman National over 7 rounds. You can find more information on these series further into this booklet. The F1 class will be run as part of the Clubman National.

Both the National and Clubman National series are run outdoors, with the season running from 1st April to 30th September. All of the venues we visit are purpose built, tarmac circuits. All classes run on a control tyre which ensures a level playing field and reduced cost in tyre selection. The tyre we use is voted on by our drivers before the season starts. We also vote on which tracks we visit through the year, so our drivers have a lot of say in the direction our series takes.

We are an innovative section. For the 2017 series we have made all junior entries into our events half price, as we recognise that our young drivers need to be encouraged and nurtured into what we hope will be the world champions of the future. We have changed the National series format from a 2 day meeting, to a 1 day meeting after listening to feedback from our drivers. We have also adopted a brand new class into the National series which has proved popular in Europe. We hope this new 13.5 Blinky class will prove popular, and assist our drivers in competing at the highest level internationally.

Our national series has become world renown for its competitiveness and prestige. This has been thanks in no small part to the will and enthusiasm of club and BRCA officials and also of our competitors, who have countless years of experience and a vast knowledge base to share with newcomers. We like to think of ourselves as a friendly class of RC racing in which you can choose to compete at any level.

Our aim is to organise the biggest and best 1/10th scale Touring Car and F1 National Championships in the world, while giving good value for money. We hope that you will choose to become a part of what we do and come and race with us.

I wish you ever success with your racing this season and hope to see you trackside.

**Mark Trinder**

Chairman, BRCA 1/10 Electric Circuit Section

# 1/10th Electric Circuit Officials

**Mark Trinder**  
Chairman



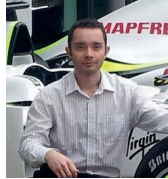
**Gavin Clinch**  
Vice Chairman



**Peter Covell**  
Secretary



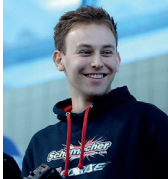
**Dale Burr**  
Competition Sec



**Mike Haswell**  
Treasurer & Timekeeper



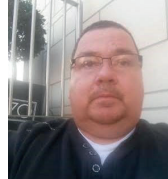
**Elliott Harper**  
Compliance Officer



**Chris Betts**  
Event Manager



**Alister Hart**  
National Scrutineer



**Paul Coleman**  
Clubman Scrutineer



**Adrian Jefferies**  
National PRO



**Lisa Keen**  
Clubman's PRO



**Chris Grainger**  
National Driver's Rep



**Dom Shore**  
Clubman Driver's Rep



**Darren Newton**  
F1 Rep



## F1 Sub Committee

Javier Jiménez James Greener Terry Lee



# 1/10th Electric Off Road

The BRCA 1/10th Off-Road Section promotes and organises race meetings at Club, Regional and National level and positively encourages the progress of drivers from level to level. The pinnacle of the Section is the National Series, (widely regarded around Europe as a “model” for Off-Road event organisation), which provides the results from which the British Team is selected for European and World Championships. Our aim is to encourage people of all ages to join-in, to compete within our rules and to go home satisfied knowing that they have been allowed to achieve their best, in an enjoyable and friendly environment.

We race 2WD and 4WD buggies (referred to as “cars” by the drivers), which are designed for many surfaces. Tracks are built on; grass, dirt, astroturf or mixes of surfaces. Their design includes various features that are placed to test the driver’s skill and ability to the full. Humps, jumps, hollows, camber changes and a fast straight make for a perfect day’s racing. Buggies are purchased in kit form from specialist model shops and can be built in a matter of hours. The car will include fully independent suspension with interchangeable oils and springs for fine-tuning opportunities. Rechargeable batteries are used to power a noise free electric brushed or brushless motor. Drivers race for five minute periods to achieve their best possible result using both their driving skills and ‘car set-up’ abilities.

The 1/10th Off-Road Section sanctions a variety of events to cater for the skill levels of all members:

**Regional Series:** The UK (including Scotland, Wales & Northern Ireland) is divided into eleven Regions. Each Region organises a Regional Championship for 2WD and 4WD Classes. Based on the results of each Regional Championship, Licence Grades are awarded for the following year. Contact details for the Regional Representatives can be accessed from the Section Officers on the BRCA website or in this Handbook.

**National Series:** This is the pinnacle of Off-Road Racing in the UK. Our more experienced drivers often make the ‘top’ Finals at International events and are regarded as some of the best drivers in the World. The National Series consists of six events in 2WD and 4WD, with each event run over two days. These events are limited to 120 drivers each day and are often over-subscribed. Entry to the National Series is done directly to the Off-Road Section.

**Junior, Veteran & Formula Championships:** Where drivers, after qualifying by racing in their local Region, gather to compete against other drivers of equal ability from all over the UK.

There are four different Championships, spread over two separate week-ends at two different venues, with 2WD and 4WD Classes on separate days of the week-end.

These are organised as follows:

**The Junior Championship:** which is split into two age groups to produce Champions in the Under 13 and Under 16 categories, (surely destined to be the stars of the future).

**The Veteran Championship:** which is split into ages of over 40 and over 50 years of age. (The Junior & Veteran’s Championships are organised at one venue over a complete week-end).

**The Formula Championships:** which are organised over a complete week-end for drivers with licence grades of F2, F3, F4, F5. (more experienced drivers with F1 licence grade are not allowed to enter these events). These Championships are primarily for Regional drivers to prove their skills against drivers of similar ability from all of UK. There are two Championships to be decided :

The F2 championship – to decide the best F2 grade driver in UK.

The F3, F4, F5 Championship – to decide the best driver in UK from these combined licence grades.

Attendance levels at all major events in the Section are high. This is a measure of the popularity of 1/10th Off-Road racing. 1/10th Electric Off-Road racing is THE PLACE TO BE for close, competitive and fair racing.

**Paul Worsley.** (Chairman, BRCA 1/10th. Off-Road Section).

## 1/10th Electric Off-Road Officials



**Chairman/EFRA Rep:** Paul Worsley

T: 01299 871137 email: paul.g.worsley@gmail.com

**Secretary/Reg. Co-ordinator:** Keith Wardle

T: 01767 261439 email: keith@kwardle.com

**Treasurer/National Entry Co-ordinator:** Jacquie Rowcliffe

T: 01884 849257 (7-9pm). email: jacquie.rowcliffe@gmail.com

**Head Referee:** John Cockill

T: 07931 390883 email: jcockill@tiscali.co.uk

**Technical Officer:** Paul Worsley. (Contact details above).

**National Timekeeper:** Gareth Bevens

T: 07976 975098 email: gareth@bevsn.co.uk

**P.R.O.:** Tony Evdoka

T: 07876 664422 email: tony@rudebits.net

**Drivers Rep:** Tom Yardy

T: 07926 710813 email: tomyardy@sky.com

### Regional Reps.

**East of England :** Colin Parsfield

T: 01638 454618 M: 07876 330687 email: colinlp76@hotmail.co.uk

**Mid South/Chilterns :** Steve Brown.

T: 07814 131536 email: s.brown2977@hotmail.co.uk

**Midlands East :** Eugene Galley

T: 07717 701083 email: eugene\_galley@hotmail.com

**Midlands West :** Tony Bishop

T: 01952 248290 M: 07894 112232. email: tony\_bishop46@yahoo.co.uk

**North East :** Kash Khan

T: 07967 590624 email: kashnerep@gmail.com

**North West :** Stuart Jones

T: 07979 153965 email: stuartslmcc@gmail.com

**Northern Ireland :** TBA

**Scotland :** Colin Nicholson

T: 07773 660089 email: colin@colin-nicholson.com

**South East :** CONTACT only for enquiries: Steven Brooke

T: 07946 408302 email: stevenbrooke@blueyonder.co.uk

**South West :** Martin Owen

T: 07805 647168 email sm208fly@aol.com

**Wales :** Tom Owen

T: 07990 526963 email: tomowen46@googlemail.com

# 1/10th IC Circuit

## Introduction

In the 1/10th IC Circuit section we race two different classes of nitro engine powered cars; 200mm touring and Sports GT. We race these cars at various on road venues around the UK for our National Championship. The championship usually runs from March until October, consisting of 8 rounds with your best 6 results to count. Each round



is run on a purpose built racing circuit. When the national series isn't running, there are plenty of local race events happening at clubs all over the country, enabling you to race all year round. 2.1cc engines power our class. We also use foam tyres for more grip and ultimately faster lap times. However on a wet or damp track it may be better to use rubber tyres. Therefore we have an open tyre choice for both our classes; you choose which to run to best suit the conditions. A correct tyre choice and you will find yourself flying up the timesheets, but a wrong one and you could drop a lot of places. It all adds to the excitement of our section's racing. As well as the various engine and tyre brands to choose from, there is also perhaps the most obvious decision of which car manufacturer to go with. There are a range of different brands available, all capable of being very competitive and giving you a great day's racing. New in 2016 was the GT8 support class which is a fun low-cost add-on to the series. These cars are 1/8th scale buggies converted to on road use with a GT shell.

## How to enter

To enter our nationals are easy you just log onto [www.brca.org](http://www.brca.org). Then you just follow the links to the booking in page.

## Race Procedure

Our nationals are held over a weekend. Saturday is an optional practice day which starts at 9am and the track shuts at 6pm (track dependant). On the Sunday we have a drivers briefing at 8:30 to address any safety concerns and the time table for the day. After the briefing we then go into a round of practice in heat order consisting of 5 minutes of duration. Next up is four rounds of qualifying heats with a 2 minute warm up to enable you to get your engine up to temperature and your tyres bedded in which then rolls in to the 5 minute qualification heat. Your fastest round of qualifying will allocate your spot in the final. The finals are of 10 cars in each heat so the top ten go into the A final then the next ten will go into the B and so on. The finals range from a 20 minute C final, 25 minute B and up to a 45 minute A.

## 1/10th IC Circuit Officials

**Chairman:** Mark Hepworth.

E:10ic.chair@brca.org

**Vice Chairman:** Mark Newby

E: 10ic.vice@brca.org

**Secretary:** Jema Conolly

E: 10ic.sec@brca.org

**Treasurer:** Dave Waters

E: 10ic.treasurer@brca.org

**Chief Scrutineer:** Peter Hastings

E: 10ic.cs@brca.org

**PRO:** Peter Hellawell

E: 10ic.pro@brca.org

**Assistant PRO:** Ollie Williams

E: 10ic.pro2@brca.org

**Entries Secretary:** Peter Hellawell

E: 10ic.entry@brca.org

**EFRA Rep:** John Russell

E: 10ic.efra@brca.org

**Safety Officer:** Mel Hartill

E: 10ic.so@brca.org

**Assistant Safety Officer:** Ian Hartill

E: 10ic.so2@brca.org

# 1/12th Electric Circuit

One of the earliest electric RC racing classes in existence, 12th Scale can trace its roots back to the 1970s. Once the only electric RC track class, spawning champions in many other classes, 12th remains immensely popular in its own right, even as other RC electric classes have developed over the years.

With the recent explosion in popularity of the GT12 class, the 12th Section caters for all ages and abilities across club, Regional and National competitions. These well-attended events now cover four classes – LMP 12 (where it all started), GT12, GT10 and Formula 1.

Whether you're an occasional club racer or a pro-level driver, the 12th Section has something to offer you and we invite you to come and share experiences with us.

## Our Classes

**LMP12** – Originally developed in the 1970s, these are now the most highly developed 12th scale cars using the latest in brushless and LiPo technology. Wide tyres and aerodynamic Le Mans Prototype style body shells coupled with powerful and lightweight electronics make for incredible handling capability and impressive speed. A range of motor power classes is available from easy-to-handle 13.5 Stock right up to Open Modified for the speed freaks.



**GT12** – Smaller and simpler LMP12-style cars with clear rules and a price limit. Narrower tyres, lower running costs and GT-replica bodies make this the ideal class for club racing. We organise Regional and National competitions offering a ladder of success for GT12 drivers from their first Club drive to National Champion, all within the same set of construction and racing rules.

**GT10** – 10th scale cars with similar chassis design to LMP12. They use GT style body shells and big tyres, so are typically more forgiving to drive and less sensitive than LMP12 cars. A niche class gaining in popularity.



**F1** – As you might expect, these cars look like their full sized counterparts. Realistic body shells and rubber tyres make this an authentic-looking race class and one with a steadily rising number of drivers.

## 1/12th Circuit Officials

### **BRCA 12th Circuit LMP Officer List**

**Chairman:** Peter Winton  
T: 01332 556730 E: 12c.chair@brca.com

**Secretary:** Alan Hubber  
M: 07738 706996 E: 12csec@brca.org

**Entries and Qualifying Officer:** Stewart Craig.  
M: 07539 230599 E: 12c.qualifying@brca.org

**Treasurer:** Jim Spencer.  
M: 07976 623772 E: treasurer@brca.org

**Eligibility Officer:** David Gale  
E: 12c.eligibility@brca.org

**Safety Officer:** Peter Winton  
T: 01332 556730 E: editor@brca.org

**PR Officer (LMP12):** Vacant

**Sporting Co-ordinator:** David Spashett,  
M: 07968 082493 E: 12csporting@brca.org

**EFRA Rep:** Jim Spencer

### **BRCA 12th Circuit GT Officer List**

**Chairman (GT):** Niall Cochran,  
E: gt.pro@brca.org

**Secretary (GT):** Vacant

**Treasurer (GT):** Jim Spencer.  
M: 07976 623772 E: treasurer@brca.org

**Eligibility Officer (GT):** David Gale  
E: gt.eligibility@brca.org

**Safety Officer (GT):** Peter Winton

**Sporting Co-ordinator:** David Spashett



# Stockcars

## 1/8th Stock Car Racing

1/8th Stock Cars are a radio controlled model car section of the BRCA.

This section of model car racing is the oldest form of radio controlled oval racing, having been around since 1973. Based on the full size BriSCA F1 formula, the section follows the same rules as closely as possible, with car specifications closely scrutinised, colour coded/driver graded race starts and the encouraged use of legal contact ensure it remains one of the most exciting and competitive forms of RC racing around.

Cars are put together by drivers using a steel chassis frame, RC steering & throttle servos and nitro fuelled single cylinder 3.5cc engines provide the power, which is delivered to the rear wheels by a belt driven single beam axle.



There are clubs spread across the UK and Holland, where all tracks have purpose built racing facilities with computerised lap scoring systems which work with transponders fixed to the cars. Tracks are oval in shape with an infield and outer steel plate barriers, surfaces are tarmac and typically range from 30-40 meters in length.

Meetings follow a similar format to the full size formula, whereby drivers take part in heats with the aim of qualifying for the meeting final. A consolation race is held as a “last ditch” effort to gain a place in the final and any drivers that don’t make it through to the final or consolation can compete in a Grand National race.

During regular meetings drivers race in 4 heats consisting of up to 6 cars, with each heat lasting 4 minutes. After this “heats round” the top 4 drivers with the highest scores (based on their top 3 best heats) qualify straight through to the meeting final. The next top 6 drivers battle it out in a 4 minute consolation race, where the top 2 win places in the 5 minute final. Some clubs run a Grand National race for the next 6 drivers who finish outside the original top 10 from the heats.

The difference between a 1/8th meeting format and full size is that in 1/8ths, your heat scores are based on how many laps you complete during the race and not your position at the end of the race (however this rule does not apply to the knockout rounds of a championship meeting, see next paragraph).

Championship meetings are where things get tougher with the addition of knockout rounds. Drivers compete in heats as per the club meetings, however the top 24 drivers then get seeded into quarter-finals. The top 3 from each quarter final then get sorted into semi-finals, where again the top 3 from each race qualify for the championship final. Grand Nationals are not contested at championship meetings.

Much like other oval racing formulas, 1/8th stock car drivers are given a grade which reflects their ability. A driver's grade is based on their positions during races; each position is awarded a certain amount of points leaving a driver with an overall points haul per meeting. The season is split into three grade periods, with drivers going up or down the grading table at the end of each period. Grades are displayed by the colour of a driver's car roof/wing: white for the lowest point scorers, then yellow, then blue, then red and finally superstar. Special roof colours are awarded to drivers who win championship titles.

Drivers can also win titles at club and regional level, as well as trophies being presented at the end of the each season for things such as grade awards (best blue never red, for example)

In short, 1/8th stock cars are an extremely fun and affordable alternative to BriSCA F1 where anyone can be competitive and challenge for titles, or a perfect hobby for those simply wanting to have a good time at the weekend!



# 1/12th Stock Car Racing

## The Cars

All the cars are a reasonable representation of the full size Brisca F1 and F2 stock cars being raced on Ovals around the country.

Unlike other classes, there is no shop ready kit available, but we have a number of racers producing cars built using the construction rules of the Section, and spares are readily available.



## Type of Track

These cars are raced indoors on a carpeted Oval Track. There are a numerous Oval clubs up and down the country, most of which can be found in the back of this booklet, and/or on the BRCA web site.

There is no standard size of track, some are quite small, while others are quite large in comparison, this adds to fun of adjusting your driving skill to match the track conditions, just as in full size racing.

## Racing

Most clubs race on an evening all year round , with heats of upto 8 cars racing for 5 minutes., with 3 or 4 rounds and a final. This is full contact racing, and it isn't necessary to be the fastest, but be skilful in how you handle or avoid the hits that brings the success.

The BRCA National Series runs from February through to October mainly on weekends

At the Nationals there are trophies at each meeting and points for the end of season trophies for the best drivers.

All ages and abilities are catered for and most clubs and venues have disables access. We hold the World Championships and European Championships on alternate years.

## Other

One thing that is apparent at stock car meetings, be it National or Club events, is everybody is having fun. There is a serious side to the sport, winning trophies, points and the World Championships, but the main ethos is åhaving fun.

You will not break the bank if you wish to take up this form of radio controlled car racing, for as little as around £300 you could be on the track racing The best way to find out about these is to visit one of the local clubs that race them

If you wish to know more take a look at the BRCA web site under 1:12th Stock car, where you will find more details of clubs who race these cars.

## Stock Car Section Officials

**Section Chairman:** Gary Osborne

M: 07739072025 E: ozzy3976@hotmail.com

**Secretary:** Steve Wearing

M: 07835317435 E: swearin2@gmail.com

**8th Vice Chairman:** Ben Harding

M: 07944360363 E: benharding471@gmail.com

**8th Treasurer and Race Numbers:** Jonathan Goodacre

M: 07810102807 E: j.goodacre73@live.co.uk

**8th Points compiler and Grading:** Sam Wearing

M: 07590908937 E: doink24@hotmail.co.uk

**8th Scrutineer:** Scott Grocock

M: 07967634369 E: theferris@hotmail.co.uk

**Public Relations Officer:** Gary Osborne

M: 07739072025 E: ozzy3976@hotmail.com

**12th scale F1 Chairman:** Mark Craig

M: 07854881836 E: mark\_craig04@hotmail.com

**12th scale F1 Secretary & Treasurer:** Anthony Wyper

M: 07982141011 E: Anthony.wyper@gmail.com

**12th scale F1 Scrutineer:** Miklos Szabados assisted by Dan Skeels

M: 07976353496 E: styleandgrace@talk21.com

M: 07825303406 E: danielskeels@btinternet.com

**12th scale F2 Chairman:** Dave Tomlinson

M: 07977000995 E: dot3434@gmail.com

**12th scale F2 Secretary & Treasurer:** Lee Bishop

M: 07779324468 E: lotus.lee@hotmail.co.uk

**12th scale F2 Scrutineer:** Bob Harley

M: 07817866790 E: bob@harley12.freeserve.co.uk

**12th Scale F2 Race numbers:** Tony Perry

M: 08766774987 E: tttracing@btinternet.com

### 8th scale Regional Reps:

**Northern:** Dick Batty and Amelia Batty

M: 07966387562 E: dbrfabrications@gmail.com

**Midlands:** Paul Dexter and Mick Goodhall

M: 07791493284 E: pdracing55@gmail.com

M: 07802635530 E: mickgoodhall5@gmail.com

**Southern:** Micky Betts and Ricky Slater

M: 07828661871 E: nikkibetts22@hotmail.co.uk

M: 07881633906 E: rickyslater26@hotmail.com

# 1/12th Electric Oval

This Section of the BRCA races 1/12th scale – Mini Stox, Saloon Stox, Hot-Rods, Stockcars and Bangers. All these classes emulate their counterparts in the full size race arena. Both the Hot Rod and Banger are commercially available at model shops, while the other classes have a number of racers producing cars and/or they are scratch built using the construction rules of the Section. All the cars are a reasonable representation of the full size race cars being raced on full sized tracks. Construction rules for all the above classes can be found on the BRCA web site, under the Section of 1/12th Oval.

## Type of Track

As the Section name would suggest, these cars are raced on an Oval Track. All tracks are indoors and all cars are raced on carpet. There are a numerous Oval clubs up and down the country, most of which can be found in the back of this booklet, and/or on the BRCA web site. There is no standard size of track, some are quite small, while others are quite large in comparison, this adds to fun of adjusting your driving skill to match the track conditions, just as in full size racing.

## Racing

Mostly all clubs race all year round. In addition to this many clubs come together to form Area Championships and these usually take place within the winter months. The BRCA National Series is run loosely within the summer months, starting in February/March going through to September/October. Within our Section there are two types of race meetings: the Stockcar and Bangers generally race at the same meeting, while the Saloons (Minis, Saloons & HotRods) race at other meetings. Therefore we have the Stockcar meetings and the Saloon car meetings.

Of course this is for the National Series, at Club level many of the cars will be run in their respective classes on the same club night. Most clubs will have some form of trophy or trophies to be awarded usually monthly. At the Nationals there are trophies at each meeting to be raced for and points for the end of season trophies for the best drivers within each class of car. All ages and abilities are catered for and most clubs and venues have disabled access. We hold the World Championships for Stockcars and Hot-Rods on alternate years.

## Other

One thing that is apparent at the 1/12th Oval meetings, be it National or Club events is everybody is having fun. There is a serious side to the sport, winning trophies, points and the World Championships, but the main ethos is having fun. You will not break the bank if you wish to take up this form of radio controlled car racing, for as little as around £200 (depending on the class of car) you could be on the track racing, and racing the same standard car as the next guy. If you wish to know more take a look at the BRCA web site under 1/12th Oval, where you will find race reports and contact names etc. Happy racing!

## 1/12th Electric Oval Section Officials

**Chairman:** Gary Christy.

T: 01354 653045 E: [gary@christy.org.uk](mailto:gary@christy.org.uk)

# Bikes, Electric & IC

## Introduction

1/5th bikes have grown over the past few seasons, with several World Championship events, the first at Brookland ('06), last year in Sweden and this year in Spain, so the future is looking good. Bikes vary in design but follow common construction rules to keep them in scale and a fair representative of the real thing. RTR versions of Electric and Nitro bikes are available from the likes of Thunder Tiger, specialist companies such as KP Designs, RG, Lightscale and NF have developed racing chassis with the latest technology and materials to assure a performance enhancing package.

The engineering prowess of individuals is actively encouraged, and scratch built specials are frequently seen on track, including the popular Moto3 style stock bikes that utilise the smaller front wheel on the back.



## Race Entry



Bikes are performing regularly at Clubs, including Adur, Aldershot, Cotswold, Craigavon, Mendip and Southend with a 6 round National season planned for 2017. The busiest place for information and an up to date entry list would be the Moto5 forum which can be found at [www.moto-5.com](http://www.moto-5.com). Also emailing any of the bike contacts listed under the BRCA bike section will enable them to send you any relevant details or information regarding race entry. Please feel free to come along to any of the meetings even if you just want to ask questions or have a bike that

you want us to look over. The bike racers are very friendly and always willing to help newcomers get their bikes up and running.

## Race Procedure

The format for our National series consists of 2 qualifying rounds of between 8-12 minutes (time depending on entry numbers) based on your 3 fastest consecutive laps. This gives you the opportunity to pull into the pits make adjustments and then go out again for another try. Plus it's not so critical if you crash and have to be marshalled, your heat isn't lost completely. There are then 3 finals which are of 8 minute duration with your best 2 counting individually towards your points tally in the championship.

## Bikes, Electric and IC, Section Officials

**Chairman:** Scott Adderson

M: 07976 468742 E: scott\_adderson@hotmail.com

**Secretary:** Andy Carless

T:01252 655744 E: andy@carless-family.co.uk

**Treasurer:** Martin Woodcock

T: 07787 538713 E: martin@homer747.f9.co.uk

**Health & Safety:** Neal Vater

T: 07546 983138 E: nealnoddy@aol.com

**Race Directors:** Neal Vater

T: 07546 983138 E: nealnoddy@aol.com



# Large Scale Off Road

The Large Scale Off-Road (LSOR) Section of the BRCA is one of the newest Sections and covers the largest scale of off-Road model vehicles on the market with BRCA affiliated Clubs throughout the country. Our national race series is open to any make of off- Road vehicle whether that is two or four wheel drive, 23, 26 or 30cc petrol powered. Brakes on our petrol powered models can be a single lay shaft rear brake, hydraulic or air brakes front and rear which all help to stop the large



scale cars which are capable of speeds in excess of 50 mph from their two stroke petrol primed engines. As a rule the top end kits are complete with everything apart from radio gear, engine and fuel. Ready to run kits are also available with everything apart from fuel making large scale off road racing available to all. All models can be modified as and when needed to the driver's specification.

The BRCA National Series runs throughout the summer months normally from March until October with our drivers visiting all four corners of the country. When the National Series is over the majority of the Clubs then run interclub meetings over the winter months, giving you all year round off-Road racing.

If you would like to join the largest form of model car racing in the world, with Clubs all around the country, then visit the BRCA website for more details on yours local venue, pay them a visit and see what you are missing out on.

## **Our vision statement**

To provide as uniform as possible a format for large scale off road RC cars, to be able to compete with one another on an open National basis. The intention is to encompass all driver abilities and commercially available large scale off road vehicles, yet still encourage invention and innovation by allowing "one off" home constructed cars and modification of kit products.

## **What do we have?**

For 2017 there will be a buggy class and a short course (SC) class which have their own national and junior championships. The buggy class has two national championships, 2 wheel drive & 4 wheel drive for vehicles which conform to their respective technical specifications and have separate heats and finals. We also have the open class which welcomes any vehicle which does not conform to the buggy or short course (SC) technical specifications but complies with the BRCA model vehicle scope of not exceeding 1 meter in length, 20kg in weight or a maximum of 30cc engine capacity in its own championship. The open class does not have a national or junior championship. All race classes shall be respectful of the generic BRCA LSOR construction rules and in particular the 2 and 4 wheel drive buggy class technical specifications for the buggy class, and the short course truck technical specification.

Drivers are classified as either a National or Clubman driver, and those under 16 at the start of the year are deemed a junior. Our normal race format is for three rounds of qualification heats to determine the day's qualification positions. Finals are run upon the driver's qualification position and by the end of the day we have our meeting winner. Whilst the National series drivers may be competitive we have one of the friendliest and helpful series around, so why not come and join us? Not only is large scale racing popular in the UK, with numbers increasing year on year, but also within Europe, there being many opportunities to enter European race meetings.

2017 sees the BRCA Large Scale Off Road host the 2017 EFRA European Championship at the Nene Valley Raceway Off Road Model Car Club from the 24th to the 29th July.

## Large Scale Off Road Section Officials

**Chairman, Webmaster and Race Director:** Darren Worth

M: 07976 267385 E: Isorchair@brca.org

**Vice Chairman:** Dane Whittleston

M: 07985 250578 E: Isorvice@brca.org

**Secretary:** Pete Barnes

M: 07921 651008 E: Isorsec@brca.org

**Treasurer:** Dane Whittleston

M: 07985 250578 E: Isortreasurer@brca.org

**PRO:** Steve Jones

M: 07929 307689 E: Isorpro@brca.org

**Safety Officer:** Paul Gresty

M: 07837923095 E: Isorsafety@brca.org

**EFRA Rep:** Mike Humphreys

M: 07781 743116 E: Isorefra@brca.org

**Scrutineer:** Mike Humphreys

M: as above E: Isorscrut1@brca.org

**Scrutineer:** Karl Norris

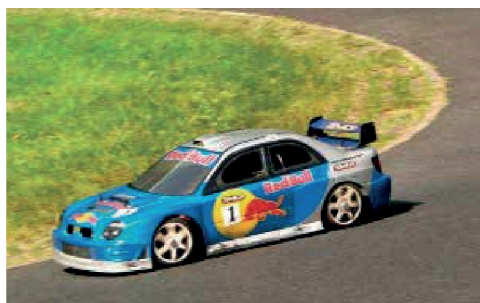
M: 07966 506939 E: Isorscrut2@brca.org

**Scrutineer:** Richard Fallowfield

M: 07876 460166 E: Isorscrut3@brca.org

# Large Scale On Road

Welcome to Large Scale Circuit Racing. We currently race touring cars and FG 4WD Mini's at our National Championship race meetings and we have rules in place to allow a Formula one and Truck class if we get enough interest. The cars we run are 1/5th scale, most of the cars are built from aluminium & carbon fibre composite with the FG 4wd minis mainly built of plastic. The cars are powered by 2 stroke petrol engines and range from 23cc up to 29cc depending on the class raced. Other features include hydraulic disc brakes all-round, oil filled adjustable shock absorbers and fully adjustable suspension geometry. All the cars are single speed, starting with a centrifugal clutch through to a limited slip differential to maximise grip from the moulded rubber tyres. The tyres come in various grades to suit all tracks & driving styles. The cars are about 900mm long and 380mm to 390mm wide. At our Nationals the cars are subject to strict rules, please read these to make sure your car complies.



The cars can be purchased as a complete ready to run kit or a rolling chassis which you can build to your own spec. The cars start from around £800.00 for a standard Mini. The BRCA Large Scale Section promotes classes to cater for Novices through to the very experienced European and World Championship level racer.

The FG Mini class was introduced in 2015. This series has proved very popular and brought new racers into our National Championship series, it's cheap and racing is very close due to the strict options allowed, please see the rules.

If you are interested in joining what many have described as the most realistic scale of circuit racing, please contact any of the Large Scale ON Road committee.

The 2017 National series will consist of seven rounds with the four best rounds to count. At the moment we have three classes - Touring Cars, GTS Saloons & FG 4wd Mini with the possibility of Formula One.

Points will be scored on a basis of 100 points for a win reducing by 1 point for each subsequent place; i.e. 99 for second, 98 for third etc. Any driver achieving fastest qualifying time in their class will be awarded ONE extra point on top of that meeting's score.

There is also a separate championship for drivers over 40. This will be decided from the best number of laps and times regardless of which class entered.

Tied championship positions shall be resolved by firstly comparing the number of 1st, 2nd 3rd places etc, then by qualification from counted meetings. If there is still no resolution, then the championship positions will be deemed a tie.

The BRCA promotes classes for the novice driver right through to the expert racer. The more novice driver will compete in the GTS class, nevertheless still very competitive and very exciting to watch. The more advanced driver will enter the Saloon Touring car class, very fast and furious with very close racing and a world-class standard of driving.

There is a growing following of Large Scale with a very healthy level of competition between the drivers. There are also more regional championships and ones aimed at the Club level driver.

If you are interested in joining what many have described as “the most realistic” scale of circuit racing, please contact any of the Large Scale Circuit Committee on the BRCA web site [www.brca.org](http://www.brca.org) under 1/5th Section.

Ian Oddie  
Section Chairman

## Large Scale Off Road Section Officials



**Chairman:** Ian Oddie  
Tel: 01200 426902  
E: [ian@oddified.freemove.co.uk](mailto:ian@oddified.freemove.co.uk)



**Scrutineer:** Paul Orman  
Tel: 02476 332877  
E: [Paulpoddy@sky.com](mailto:Paulpoddy@sky.com)



**Vice Chairman:** John Russell  
M: 07798 846930  
E: [vicechair@brca.org](mailto:vicechair@brca.org)



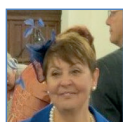
**Assistant Scrutineer:** Craig Orman  
M: 07787 360205  
E: [craig@orman.me](mailto:craig@orman.me)



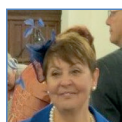
**Secretary:** Trevor Kersey  
M: 07932 696709  
E: [trevorkersey@hotmail.co.uk](mailto:trevorkersey@hotmail.co.uk)



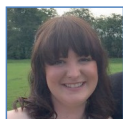
**Efra Rep:** Mike Humphreys  
M: 07780 743116  
E: [humphreys\\_mike@yahoo.co.uk](mailto:humphreys_mike@yahoo.co.uk)



**Treasurer:** Babs Kersey  
M: 07932 696709  
E: [trevorkersey@hotmail.co.uk](mailto:trevorkersey@hotmail.co.uk)



**Race Controller:** Babs Kersey  
M: 07932 696709  
E: [trevorkersey@hotmail.co.uk](mailto:trevorkersey@hotmail.co.uk)



**PRO:** Abi Swift  
M: 07889 037468  
E: [abigail.swift@talktalk.net](mailto:abigail.swift@talktalk.net)

# 1/8th Nitro Truggy

1/8th Truggys are similar to 1/8th Rallycross cars but they are wider, longer and have Truck based body shells. 1/8th Truggy races are held on off road circuits around the country. The tracks can feature all sorts of obstacles such as jumps and tabletops and they are generally made of Astroturf, dirt or grass. Truggy racing is big!! Truggys are fast, fun and exciting.



Truggy drivers are a friendly bunch and many of the top racers are more than happy to pass on tips and advice to even the most amateur drivers. Local Clubs have a wealth of knowledge to help beginners in the sport learn more about their machine. You never stop learning though, so there is always something you can do to improve the way your Truggy drives!

Truggys are all four-wheel drive, powered by a nitro fuelled engine. Engine size is unlimited, but most drivers will run a .21 (3.5cc) up to a .28 (4.6cc). The extra power of the bigger engine will help your acceleration, but the trade off can be higher fuel consumption. With all this speed you are going to want to slow down! Truggys come with a minimum of double disc brakes to bring them to a halt, but some drivers run quad brakes for extra stopping power. All cars feature fully independent suspension, which is adjustable to suit the driver and track conditions, with different spring tension rates, damper settings, anti-roll bars and adjustable suspension geometry to fine tune the cars handling, plus different tyre patterns and compounds to complete the set up.

The construction rules laid down by the BRCA limit the fuel tank size to 150cc. This gives sufficient fuel to race in the 5 minute qualifying heats, but as the finals are either 10, 15, 20 or 30 minutes long it is necessary to have fuel stops. For this you need to have a good mechanic to refuel your car, and with the closeness of the racing sometimes the finals can be won or lost on the pit stops.

You can buy an off the shelf RTR (ready to run) Truggy that will get you almost everything you need to start racing. Alternatively, the Pro versions of many models are the versions run by the very top racers. These kits are more expensive and you have to buy an engine and radio gear, but they will be a higher specification car with stronger and lighter parts. There are also second hand bargains available, check those web sites and magazines!!!

The BRCA runs a National Championship, which is open to any member of the BRCA. Within this Championship there is a Clubman's Championship and also a Junior Championship.

## AIMS

To provide a fun and relaxing uniform format for 1/8th Nitro Truggy and other off-road racing Trucks, in an Open National format. The intention is to encompass all commercially available 1/8th Nitro Truggys and other off-road racing Trucks. Electric Truggys will run with Nitro unless enough numbers to run in their own heat.

## 1/8th Truggy Officials

**Chairman:** James Tatlow

M: 07476 492799

E: jimbo@jabberingjimbo.co.uk

**Sectery, PRO Officer, Race Director:** Chris Jeffery.

M: 07812 721206

E: christopherjeffery2@me.com

# Micro Scale

## Introduction

The BRCA Micro Section caters for 1/16th scale off road buggies, either 2WD or 4WD. The section organises an annual National championship, which normally runs October to March. The championship currently consists of 6 rounds with the best 4 rounds to count towards a drivers overall championship points, with classes split between 2WD & 4WD given sufficient entry figures.



The section technical/constructional rules are used to govern the National

Championship, and they are also used as guidelines by many RC clubs across the UK who also cater for Micro buggies.

The BRCA Micro Section committee are committed to actively promoting Micro racing across the UK and are always happy to be contacted by both new and experienced drivers looking for information about what we do!

How to enter our National Championship

Visit our section page on BRCA.org for all the up-to-date information you need for entering our National Championship <http://www.brca.org/content/electric-micro/134>

## Micro Section Officials

**Chairman:** Phil Sleigh

M: 07966 651 210 E: [mobile@philsleigh.co.uk](mailto:mobile@philsleigh.co.uk)

**Secretary:** Tony Bishop

M: 07894 112232 E: [tony\\_bishop46@yahoo.co.uk](mailto:tony_bishop46@yahoo.co.uk)

**Treasurer:** Andrew Jones

E: [andyjonesbrca@hotmail.co.uk](mailto:andyjonesbrca@hotmail.co.uk)

**Public Relations:** Position currently vacant

**Entries Officer:** Andrew Jones

E: [andyjonesbrca@hotmail.co.uk](mailto:andyjonesbrca@hotmail.co.uk)

**Health & Safety:** Stuart MacDonald

E: [macdonald338@btinternet.com](mailto:macdonald338@btinternet.com)

**Track Liaison:** Position currently vacant

**Time Keeper:** Jamie Anderson

E: [james.anderson@btinternet.com](mailto:james.anderson@btinternet.com)

**Drivers Rep.:** Tony Bishop

M: 07894 112232 E: [tony\\_bishop46@yahoo.co.uk](mailto:tony_bishop46@yahoo.co.uk)

# Constitution

## 1. TITLE

The Association shall be known as The British Radio Car Association.

## 2. OBJECTIVES

- (a) To promote the construction and competition of radio-controlled cars.
- (b) To facilitate the exchange of information and ideas relating to the sport.
- (c) To set rules and standards for construction and competition.
- (d) To encourage National and International competition within a co-ordinated calendar.

## 3. MEMBERSHIP

Membership shall be open to all and shall be deemed to commence when the Association issues the appropriate membership documentation. Membership shall be within the following categories:-

- (e) Full Individual members
- (f) Fellows - Persons who in the opinion of a two-thirds majority of an AGM of the Association have performed outstanding service to the Association. Fellowship of the Association carries automatic Full Individual membership for life and may only be rescinded by a two thirds majority vote at an AGM of the Association. Fellows are to be elected at the AGM of the Association on the recommendation of the Executive Committee. Not more than two Fellows may be elected in any one year.
- (g) Club Affiliation - Any club who has satisfied the Association Secretary of its willingness and ability to fulfil the obligations of an affiliated club. Each Club will receive four free memberships that will be taken up by the Chairman, Secretary and two other appointed officials from that Club.
- (h) Club Affiliated Member - All members of any club which has been accepted for affiliation, become affiliated members, subject to the necessary administrative procedures.

The Handbook will be posted to all members.

All members have the right to attend and vote on issues at the Association AGM and Section Conferences. Proposals for any changes to the Constitution or General Rules must be received by the Association Secretary four weeks before the AGM date latest. Each Section will publish the proposals for changes four weeks prior to the AGM.

## 4. SUBSCRIPTIONS

The subscription period shall be one year running from the 1st January to the 31st December of the same year. Membership subscriptions shall be reviewed and fixed annually at the AGM. Any member who has not paid his/her subscription within ONE month of the renewal date shall be assumed to have terminated his/her membership.

## 5. RESIGNATION

Any member wishing to withdraw from Association membership must notify the secretary in writing.



## **6. CESSATION OF MEMBERSHIP**

Any member failing to renew his/her membership as required or any member notifying his/her resignation shall forfeit all right to claim on the Association, its property or its funds.

## **7. OFFICIALS**

To qualify for election to any Association Committee position, the member so elected will become a Full Individual member of the Association if not already one. The following Officers shall be elected annually for a period of two years at the AGM :- Chairman, Secretary and Treasurer plus such other Officers as may be deemed necessary. Nominations for these positions to be sent to the Secretary in writing four weeks before the AGM. The nominee must be a Full Member of the Association.

The above Officers together with the Chairman and Secretary (unless otherwise nominated) from each Section of the Association shall comprise the full Association Executive Committee. The Executive may meet in full or in part where the business to be discussed is only relevant to clearly defined areas of the association, e.g. Sporting or Administrative sub committees.

A quorum of the Executive Committee shall consist of at least 60% of the Executive Officers, invited to the meeting. All Officers elected by the AGM shall be ex-officio members of all committees and subcommittees appointed within the Association.

## **8. COMMITTEES**

Section committees shall be established within the association to administer for the individual needs of the members racing interests. Each section committee shall comprise of a Chairman, a Secretary and such other committee members as sectional conferences shall decide. One official, normally but not essentially the Chairman, must attend Executive committee meetings. The title of each section shall be decided by its officers. To invite a representative from Northern Ireland, Scotland and Wales to attend Executive Committee Meetings and to circulate information of meetings to all Sections

## **9. POWERS OF THE COMMITTEE**

The Executive Committee shall manage all concerns of the Association upholding the Associations Constitution, and shall have powers to settle all points of interpretation of Association rules, providing such powers shall not overrule a resolution of the AGM. A Sectional Committee shall manage all the concerns of the racing interest for which it was established, with powers to settle all points of interpretation of Section rules, provided such power shall not overrule a resolution of a Section Conference, AGM or General Rules. A Section Committee quorum will be decided by that Section Committee. The Executive Committee and any Section Committee shall have powers to establish sub-committees to manage special interests or events and to co-opt members onto such sub committees. Any committee may, from time to time, fill any vacancy in its number which may arise for the

remaining period of office. If the conduct of any member, in or out of Association events, shall in the opinion of the Executive Committee, or member of it, be injurious to the character or interest of the Association then membership can be suspended until the matter is dealt with by the Association Executive. The Association Executive can require said person to attend such meeting as is required to explain their actions, they shall have the power to expel such member

or call upon them to resign and will there upon cease to be a member of the Association, this decision will be ratified by the Executive Committee. Should a member who has been expelled or been required to resign wish to appeal, this shall be done in writing to the Association Secretary and the appeal will be held before the Executive Committee. In every case of expulsion or required resignation of a member the decision of the Executive Committee shall be final and the excluded member shall have no remedy against the Association or Committee, or any further right of appeal. A minimum of two thirds majority shall be necessary to order an expulsion

## **10. RULE CHANGES**

The Executive committee has the power to delete, amend or change any existing rule(s) or add any new rule(s) to the Constitution, General Rules or Section Rules, to accommodate any changes in legal or fiscal requirements, or changes in recognized or legally required safety procedures. These actions can take place at any time within the association's year without the need for an EGM or AGM. Any action of this nature will be made known to the membership in the following edition of CC and will be included on the official BRCA website. Any decision taken must be ratified at the following AGM with a 2/3rds majority.

## **11. VOTING**

- 1 Proposal for change of the Association Constitution shall require a two thirds majority of member present at an AGM conference, postal or proxy vote respectively.
- 2 Proposal for change of the Association General Rule shall require a two-thirds majority of members present at an AGM conference, postal or proxy vote respectively.
- 3 Elections of all officers (including Section officers) shall be decided as follows:
  - a) For one candidate only: A simple majority vote of those members present, abstentions not considered.
  - b) For two candidates only: A simple majority vote of those members present abstentions not considered.
  - c) For more than two candidates: First: Vote taken for all candidates.  
Then: A second vote including only the two candidates with the highest votes. This will be decided by a simple majority, abstentions not considered.
- 4 Proposals for change to Construction and Procedure Rules within Section conferences shall require an overall majority (min. 51%) of those members present. If there is an equal vote, then the Chairman at his/her discretion may use a casting vote. If an overall majority is not achieved, then the amendment/rule is not adopted.
- 5 At an EGM or Postal vote, voting procedures will follow the above format.

## **12. FINANCE**

All matter relating to the spending of Association funds shall be referred through the Treasurer to the Executive Committee. The Treasurer shall make an annual financial statement to the AGM offering all relevant documents for inspection at the meeting. Sections holding funds shall be required to deliver reports as required by the Association Treasurer.

## **13. FINANCIAL YEAR**

01 October to 30 September

## **14. ANNUAL GENERAL MEETING**

The AGM shall be held as soon after the end of the financial year as is practical and in any event not later than the month of February following. No BRCA Sanctioned events may take place on the day of the AGM. The following business shall be transacted at the AGM:-

- (1) Reports on the general working of the Association and its sections.
- (2) Representation of the Association accounts.
- (3) Election of Officers and Auditor
- (4) Review and agree the annual membership fee.
- (5) Discussion of any other business of which due notice has been given.
- (6) Arrange a provisional date for the next AGM which shall in any event be held within thirty days of the provisional date.

## **15. EXTRAORDINARY GENERAL MEETING**

An EGM may be called at any time if the Executive Committee so decide. The Secretary shall also call a meeting on receiving written request to that effect, signed by no less than 10% of the membership. Such a general meeting shall take place within 28 days of the written request being received and all members shall receive 14 days notice of the meeting, but without the necessity for detailing any further particulars. A resolution of an EGM shall not be valid unless 10% of the membership is present and not unless the resolution be passed by at least two thirds of the members voting.

## **16. MINUTES OF MEETINGS**

Minutes of an AGM, EGM or annual Conference shall be published as soon as convenient thereafter and in any case before the next similar meeting. Minutes of committee meetings shall be available to all committee members, including ex-officio members, before the next similar meeting. Copies of all minutes shall be kept indefinitely by the appropriate officer.

## **17. DEFICIENCY OF FUNDS**

In the event of insolvency, the deficit shall be made good by an equal payment from each member or in such manner as an AGM or EGM shall decide.

## **18. MEMBERS ADDRESSES**

Each members address shall be recorded in the Associations records and shall be deemed to be correct unless the Membership Secretary be notified in writing of an alteration of change of said member.

## **19. CONSTITUTION RULES**

A copy of the constitution shall be forwarded to each member on joining and thereafter annually in an Association Handbook. These rules so presented shall be binding on every member. No member shall be absolved from the effect of these rules on allegation of not having received them.

## **20. INTERPRETATION OF RULES**

The Executive committee shall be the sole authority for the interpretation of these rules and the decision of the committee upon any question of interpretation, or upon any other matter affecting the Association not provided for by these rules, shall be final and binding on the members.

## **21. ALTERATION OF CONSTITUTION**

The Constitution defines the rules for government of the Association. All alterations or additions to the Constitution may only be adopted by resolution at an AGM or EGM convened according to the Constitution. Such resolution must receive a two thirds majority vote.

## **22. DISSOLUTION OF ASSOCIATION**

If at any general meeting a resolution for the dissolution of the Association be passed by a two-thirds majority of the membership present, and such resolution be confirmed at an EGM, held not less than one month thereafter at which not less than half the members are present, by a majority of two-thirds of the members the committee shall thereupon or at such date as shall be specified in the resolution, proceed to dissolve the Association. The committee shall proceed to realise the property of the Association, and after discharge of all liabilities, shall divide the same amongst all the members according to the proportions decided at the EGM.

Upon the completion of such division the Association shall be dissolved.

## **23. OBLIGATION OF MEMBERS**

- (a) To uphold the Constitution of the Association.
- (b) Affiliated clubs must keep the Association informed of the names and addresses and interests of ALL their members (stating if they are Association members in any other capacity than club affiliated members) and in addition the Association must be informed immediately of any additions, deletions or changes in their membership. The affiliated clubs must advise the Association of the name and address of the club official who is responsible for the communication of the above information.

## **24. AWARDS/PRIZES AT BRCA SANCTIONED EVENTS**

- (a) Unless the Executive committee has first given its express permission in writing, no trophy, award or prize of any kind may be given which has an intrinsic value greater than £50.00 UK Sterling.
- (b) Under no circumstances are cash prizes to be awarded.

# Frequency Information

## What frequencies are available?

The frequency bands available for the use of radio controlled model cars are shown below together with the maximum effective radiated power output of the transmitter measured in milliwatts.

Frequency	Use	Effective Radiated Power
26.96 to 27.28 MHz	General	100mW (max)
40.66 to 41.00 MHz	Surface	100mW (max)
2.4GHz Spread spectrum	Surface	100mW (max)

### 27MHz

The 26/27 MHz band is also allocated for other low power telemetry and telecommand devices as well as model control. The 27 MHz Band was one of the first two radio control bands approved in the U.K. It is shared with several other users, including C.B. Radio. Because of possible interference from other users, it is not recommended for aircraft or other models where interruption of control of the model is likely to be a safety hazard.

### 40MHz

The 40 MHz band is solely dedicated to surface modelling. It consists of 38 channels with a 10 kHz channel spacing, the centre frequency of the first channel being 40.665 MHz. The last channel has the centre frequency of 40.995 MHz. All crystals must be used with 10kHz spacing and end with 5. The centre frequencies are 40.665, 40.675, 40.685 and so on until 40.995.

### 2.4GHz

The 2.4GHz spread spectrum is a 'shared' band where the transmitter and receiver negotiate an exclusive channel for the duration of the transmission. This band is also open for other equipment such as WiFi.

These are the 3 main bands that we use in racing. Please check out the UKRCC at: <http://www.ukrcc.org>

For licensing and further reading go to:

<http://stakeholders.ofcom.org.uk/spectrum/information/licence-exempt-radio-use/licence-exempt-devices/ofw311>

Although there are other frequencies available they are not supported by major manufacturers and their use is difficult to police.

The use of any other frequency is specifically not allowed for the control of model cars operating within the rules of the BRCA.

Any modifications to transmitter and/or receivers is strictly not allowed. External power supplies to the transmitter are specifically not allowed.

### Recommendations

The use of 27MHz band outdoors on the larger scale (1/8 and 1/5) cars with IC engines is not recommended unless a failsafe device can be fitted. It is preferable that all cars use PCM type receivers with the failsafe operable and set correctly. All elements of the radio equipment be purchased from and maintained by reputable suppliers that are capable of providing some form of certification that the equipment is designed for the use you will be putting it to. At race meetings a channel separation of 20 kHz is preferable. Transmitters should only be switched on when on the rostrum. Crystals are easily damaged and should be tested or replaced at regular intervals. Storage and transport of the equipment should be considered, 50 miles loose in the boot of the car does more damage than falling off a pit table!

# BRCA Electric Board

The BRCA Electric Board will be known by the acronym EB.

## Electric Board

**Secretary & Eligibility:** Paul Worsley. (for details see 1/10th Off Road)

The BRCA Electric Board EB was formed at the end of 2000. Within the BRCA there are different Sections that use the same electric items, which prior to the forming of the EB had to comply with varying rules within the Sections. The prime objective of the EB is to formulate a common set of rules, specifications and fix maximum prices for the BRCA Electric Sections to use where they choose to. Officers of the EB also liaise with the major International organisations for our sport, in an effort to achieve common rules and specifications that apply to International events.



The EB committee comprises of members from each of the Electric Sections that support EB procedures. This way, any proposed changes to rules are evaluated to ensure that the changes do not have a detrimental effect on any particular Electric Section. This is the only area of the BRCA that doesn't take proposals from individual members.

The EB supports the Sections so all proposals come from those Sections when required. This process ensures that the BRCA Electric Board provides these Sections with essential areas of support for their drivers, by having common rules and procedures.

The EB committee has regular contact with distributors and manufacturers to research any changes to products and also to investigate the possible impact of new technology. Our contact base spreads worldwide to gain the knowledge we require.

We have common rules for the technical specifications of motors and batteries through the EB's close co-ordination with international Associations. As a result of many years of this work, often led by the BRCA EB, we have the same technical rules in the BRCA, EFRA and IFMAR.

British drivers entering International events can usually use the same equipment purchased for BRCA events. Whilst the approval procedures for the International Associations are similar to BRCA procedures, the dates of approval may differ and manufacturers may not submit all items to all Associations for approval. That leaves some exceptions, so you must check with the Rules and Approval lists for any International event entered.

The EB, through testing and knowledge, recommends certain ways to maintain and improve safety. Members must check the EB and General Rules to ensure they comply with these areas. This is for the safety of our members and those around them when using their RC vehicles. Most



importantly, all LiPo batteries must be contained in a safety sack or suitable container during both charging and any discharging procedures (other than when being used in a race) and the charge rate should not exceed 1C (charge at no more than the stated capacity on the battery).

All motors, batteries and speed controllers have some form of rules controlling how they are designed and made that apply to National and International competitions. The EB checks new products against these rules. Conforming products are added to lists called 'Approved Lists'. Drivers at BRCA sanctioned events – Nationals and Regionals typically – may only use the products on the 'Approved Lists' and the driver may not modify them; approved-list products must be used as sold and as described on the Approved List.

#### **Approved Lists – Updates.**

**Batteries:-** The Approved lists are updated twice a year (see the EB Rules for details of this). For Sections whose National series' are run in the summer months, the battery list is updated in December to become effective the following 1st. April. For Sections racing in the winter months, the list is updated in July to become effective on 1st. September.

**Motors:-** Motor lists can be updated at any time during the year, whenever a new motor is passed by the EB. Updated motor lists are only published on the Monday of any week following approval, to ensure all competitors have time to evaluate prior to an event.

**Speed controllers:-** To be used in the zero-timing or 'blinky' classes. The approved list can be updated at any time during the year, whenever a new product passes the software checks. Publication of any updates is only on the Monday of the week following approval.

Paul Worsley – Electric Board Secretary

**Follow this link to see the EB Rules and the latest lists of approved motors, batteries and speed controllers: <https://www.brca.org/sections/eb/>**

## Notes