

# Remote World Model Car Club

## Slough

### Factsheet (2019)

#### Track Location

Upton Court Park

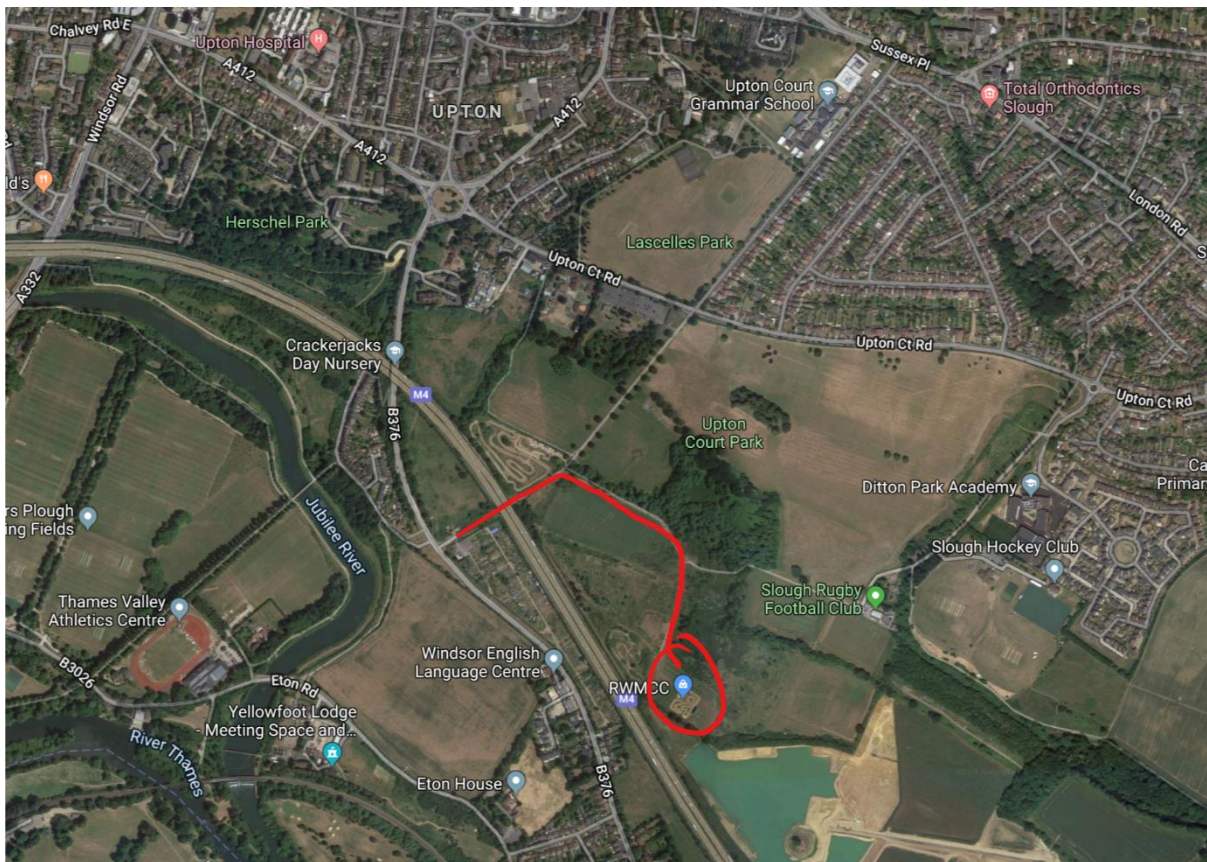
Datchet Road Entrance (Off B376)

Slough

Berkshire

SL3 9AL (this is closest postcode to the gate and is along the road opposite the entrance)

Entry is via a single track service bridge that crosses the M4 motorway. Once over the bridge, turn right along tarmac roadway. Bear right again at the fork onto gravel track and continue for 200 yards. Track is located ahead on the left. Please observe 10mph speed restriction within the park and give way to walkers and cyclists who also use the roadways and tracks within the park.



**The gate opening times are restricted and access will only be available from 15:00 on Friday 6<sup>th</sup> Sept.**

**The gate will be locked each night at 22:00, and re-opened at 07:00 in the morning on Saturday 7<sup>th</sup> and Sunday 8<sup>th</sup>.**

Extra restrictions apply this year as the M4 is undergoing works to upgrade to a smart motorway and the land to the side of the entrance bridge has been set aside as a works base, and the bridge itself is planned to be closed on the Monday 9<sup>th</sup> in preparation for its removal later in the month. **Space outside the gate is now very limited, so please DO NOT arrive earlier than the published gate opening times as you will cause an obstruction.**

Food will be provided by burger van on Saturday and Sunday.

Free camping is available with water and toilets on site.

Caravans / motorhomes are requested to park outside of the fenced area to maximise space for pit tents within.

Note, the track is located next to the M4 motorway and is under the flight path for Heathrow airport, so can be a little noisier than other venues.

To respect all campers, generators and loud music etc shall be off between 11:00 - 07:00.

Track is of all dirt construction and runs anti-clockwise. Large purpose built rostrum with raised concrete pitlane and adequate pit space and warm up table. We operate a simple 1-way system of entry / exit into pitlane and rostrum.

## Hotels:-

### Travelodge Slough

Landmark Place,  
Herschel St,  
Slough SL1 1PG

### Copthorne Hotel Slough-Windsor

Cippenham Lane,  
Slough SL1 2YE

### Holiday Inn Express London - Heathrow T5

Cippenham Lane,  
Slough SL1 2YE

### Premier Inn Slough

Uxbridge Road,  
Slough. SL1 1SU

Plus many more hotels and local B&Bs.